

# Weatherbars Door Surrounds & DIY Products

For Timber, Composite  
& PVC Doors



SEALED IN QUALITY



All Exitex draught & weather seals are manufactured to the highest standards, incorporating many unique patented features.



# Quality you can trust

---

Aluminium  
Hardened High Tensile  
to BS 1474

---

Anodising  
15-25 Micrometers  
BS 3987

---

Powder Coating  
60-80 Micrometers  
BS 6496

---

EPDM  
Gaskets to BS 4255

---

EPDM  
Cellular Rubber  
Gaskets to  
SS 243705A1, SS81813

---

PVC  
Gaskets to BS 7412

---





# Weatherbars Door Surrounds & DIY Products

For Timber, Composite  
& PVC Doors

## Contents

---

●	Thresholds	
	Mobility Weatherbars inward or outward opening	4
	Mobility Weatherbars inward opening	12
	Mobility Weatherbars outward opening	24
	Non Mobility Weatherbars inward or outward opening	28
●	Accessories	33
●	Aluminium Tiebars	34
●	Deflectors	36
●	Garage Door Seals	38
●	Bi-Fold Threshold	40
●	Stable Door Kit	41
●	Lock Edges for Composite Doors	42
●	Hinge Edges for Composite Doors	44
●	Door Surrounds	46
●	DIY Products	47
●	Floor Trims	50

### Key

---

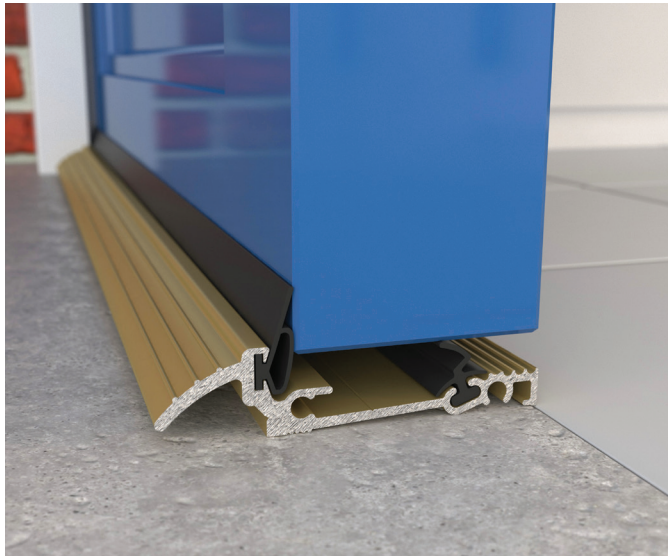
-  Wheelchair Friendly
-  Moderate Exposure
-  Severe Exposure
-  Part M - Approved

## Thresholds

### MXS 15/67

Inward

Ref: 1.01.0389



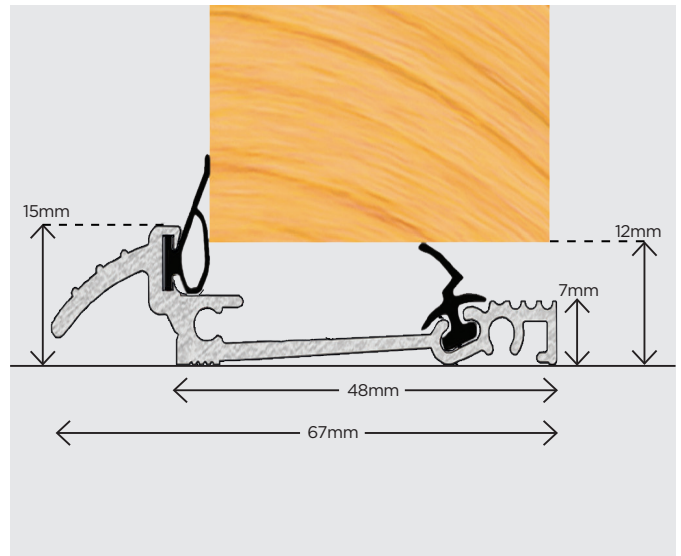
Accepts frame specific end caps to suit:

- Eurocell Composite, Linar Composite
- Duraflex Composite, Veka Composite
- Rehau Composite, Synseal Legend
- Plastmo Vogue, Plastmo Index - Spectus 63
- Eco Frame, Profile 22

Easily removable for remedial work

Available in mill & gold

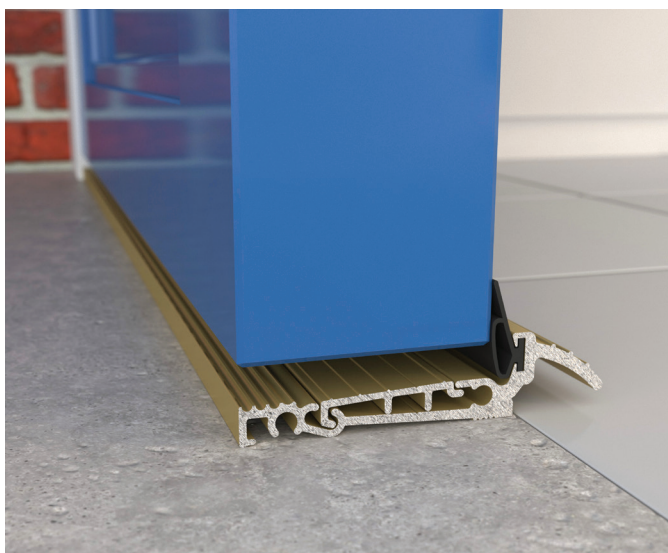
In sizes: 880mm to 6020mm



### MXS 15/67 Infill

Outward

Ref: 1.01.0396

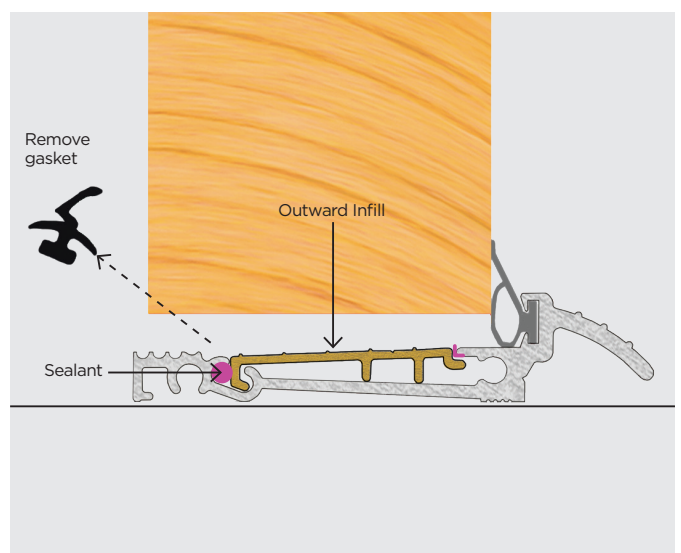


Remove gasket as per illustration

Insert aluminium infill

Available in mill & gold

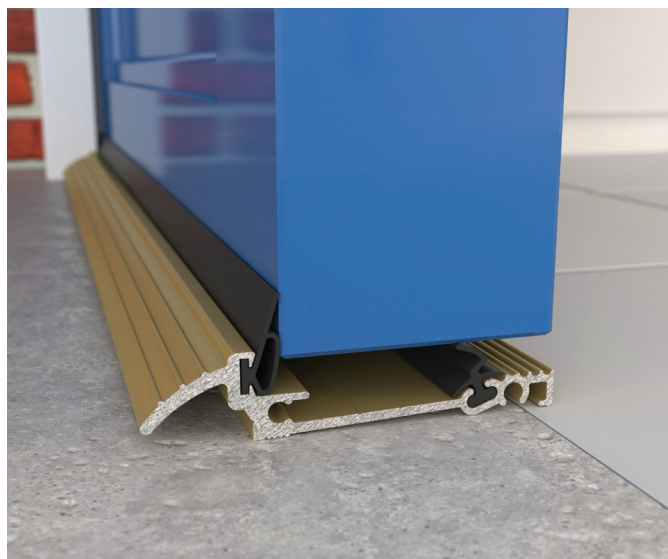
In sizes 1000mm to 6020mm



## MXS 15/72

Inward

Ref: 1.01.0387



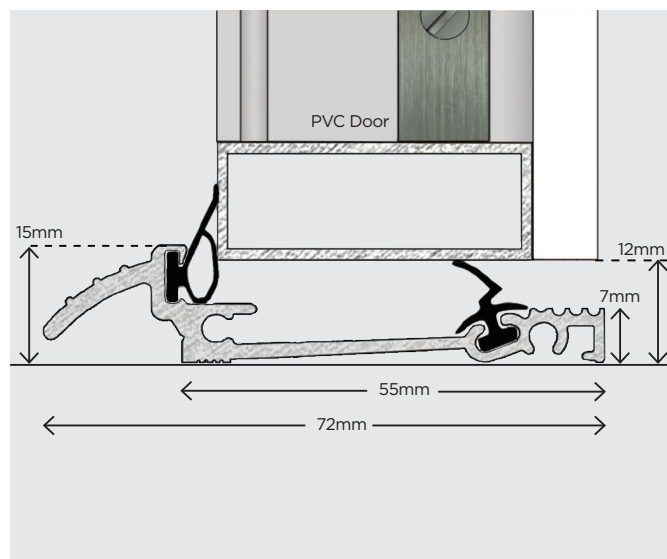
Accepts frame specific end caps to suit:

- Rehau 706
- Spectus Elite 70
- Swish 24/7
- Duraflex PVC

Easily removable for remedial work

Available in mill & gold

In sizes 880mm to 6020mm



## MXS 15/72 Infill

Outward

Ref: 1.01.0388

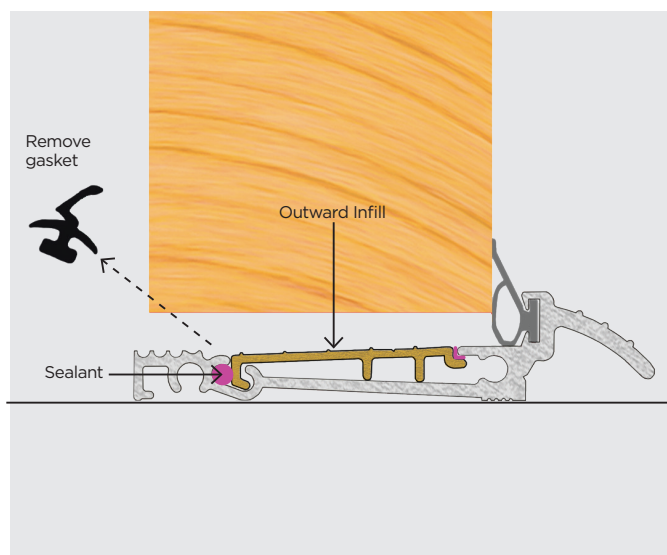


Remove gasket as per illustration

Insert aluminium infill

Available in mill & gold

In sizes 1000mm to 6020mm

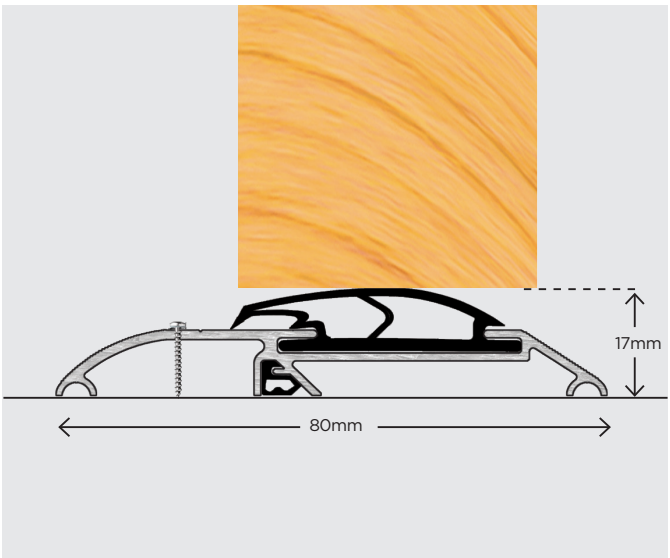
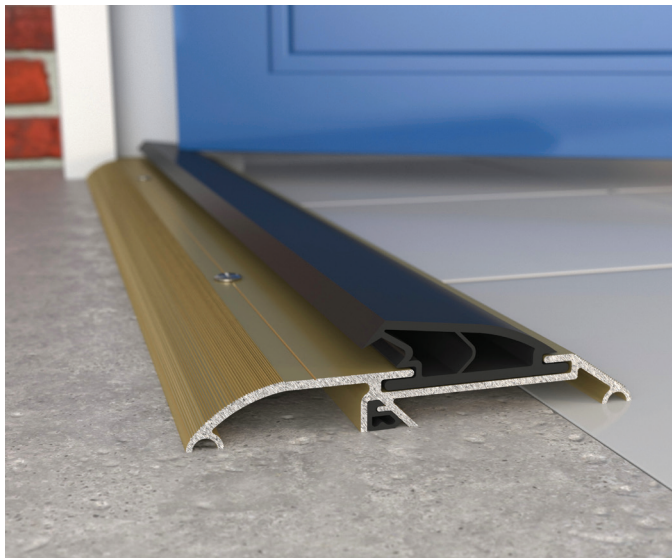


Thresholds

Threshex

Inward & Outward  
Ref: 1.01.0450

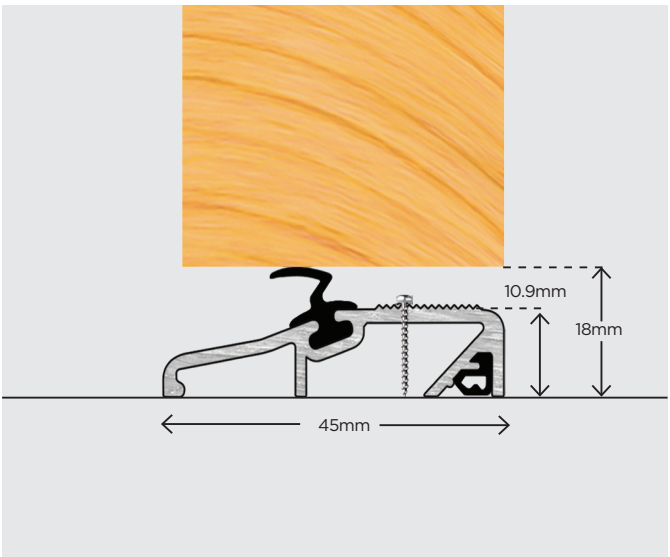
Available in mill, gold, bronze & black  
In sizes from 933mm to 4590mm



Slimline

Inward & Outward  
Ref: 1.01.0420

Available in mill, gold & bronze  
In sizes from 914mm to 4590mm





## Kleertred 20 & 25

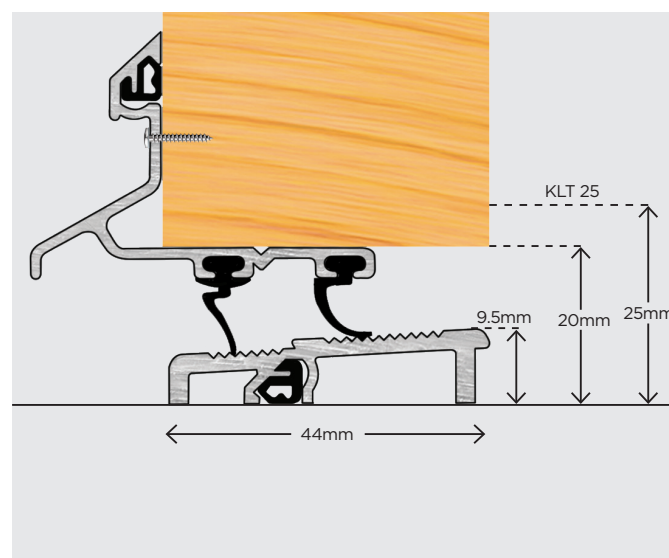
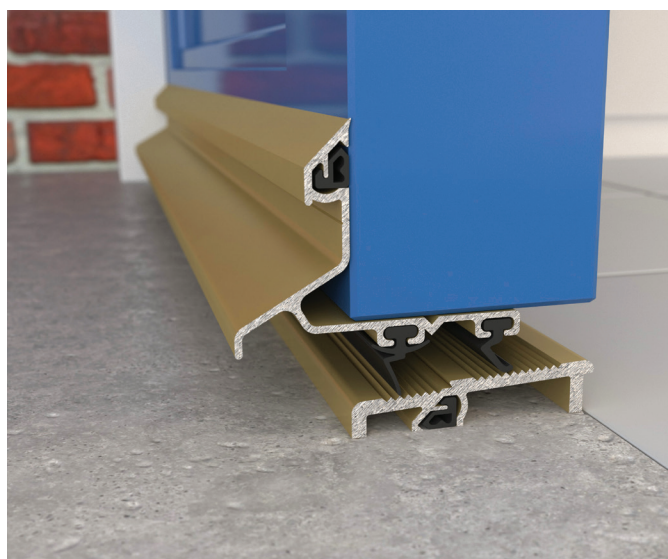
Inward & Outward

**20** Ref: 1.01.0200

**25** Ref: 1.01.0205

Available in mill, gold & black

In sizes from 914mm to 4590mm



## Universal Mobility Threshold

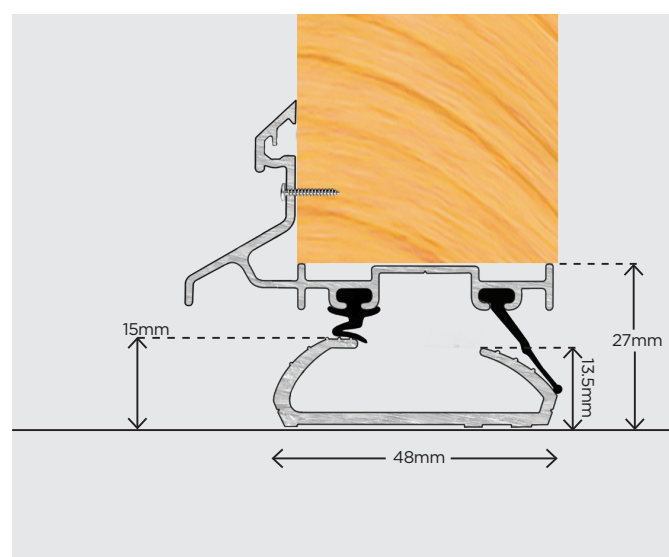
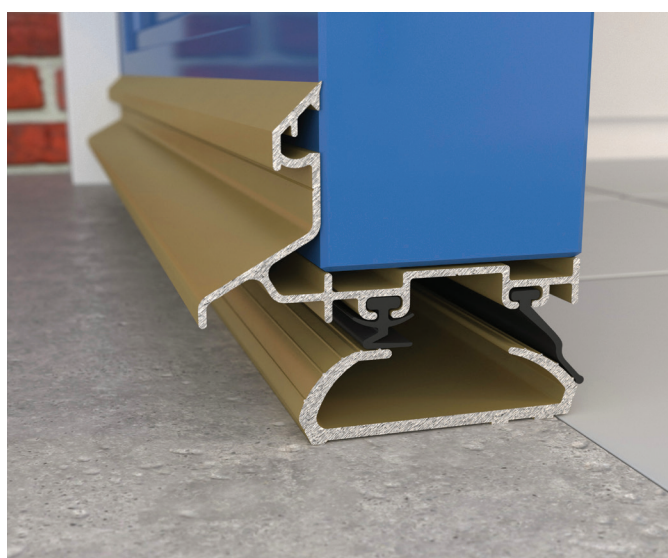
Inward & Outward

**Inward** Ref: 1.01.0530

**Outward** Ref: 1.01.0535

Available in mill & gold

In sizes from 914mm to 4590mm



## Thresholds

### MVS Weatherbar

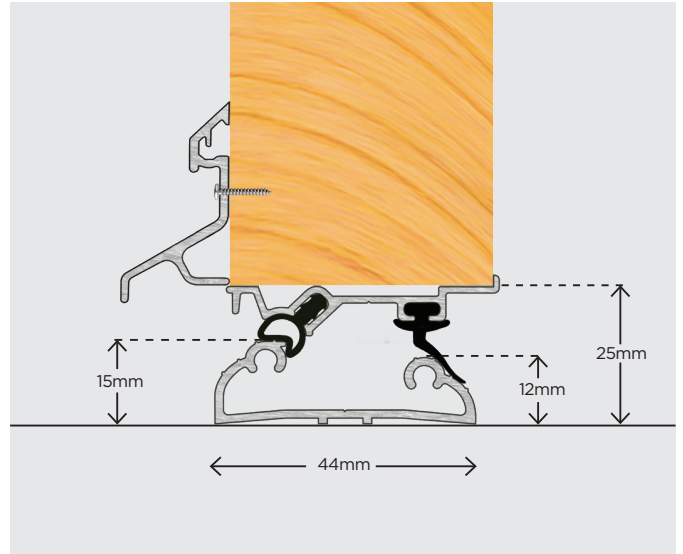
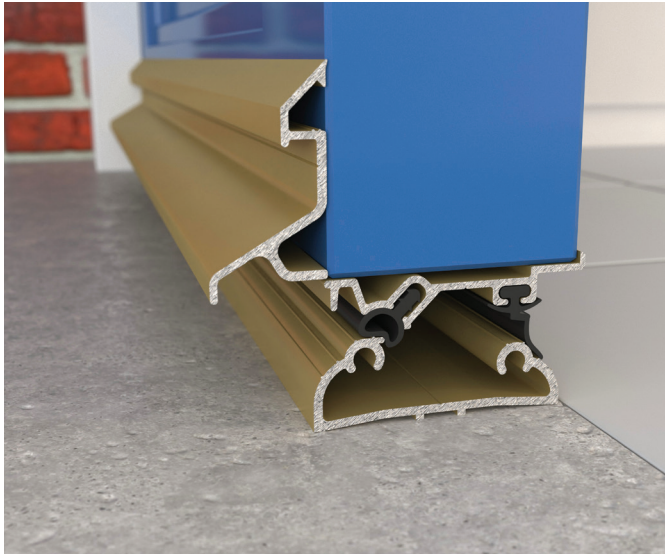
**Inward** Ref: 1.01.0540

**Outward** Ref: 1.01.0545

Separate deflector & seal carrier

Available in mill & gold

In sizes from 914mm to 4590mm



### Industrial/Commercial Threshold Weatherbar

**Inward & Outward**

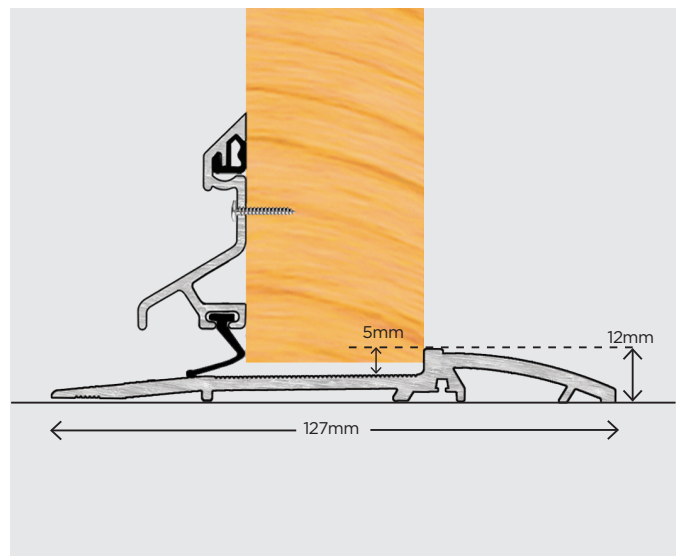
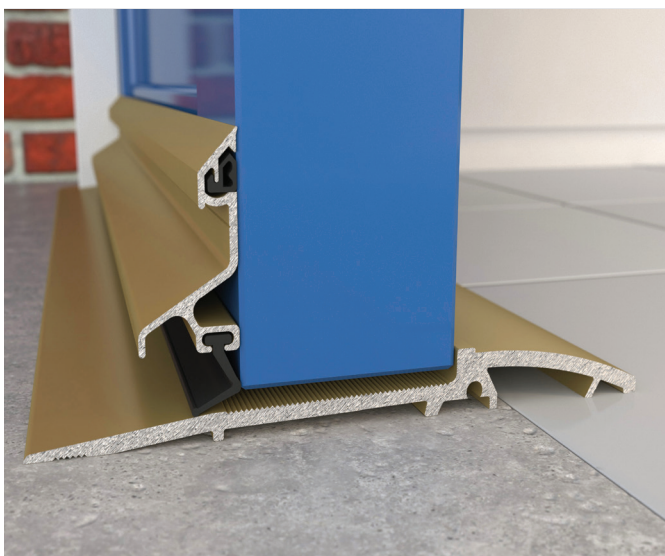
Ref: 1.01.0180

Accommodates forklifts & heavy goods vehicles

Suitable for roller shutters

Available in mill & gold

In sizes from 1000mm to 4590mm



## Concealex A1502

Inward & Outward

Ref: 1.01.0100

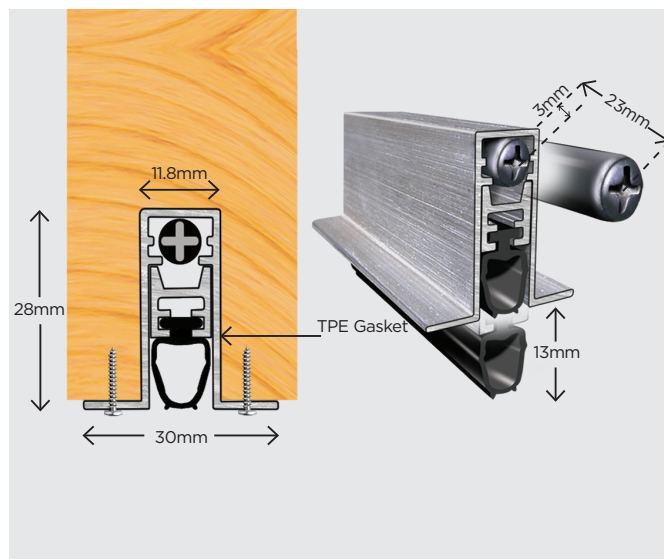


Automatic door bottom seal

Acoustic rating - 41db

Can be trimmed up to 100mm

In sizes 0.8m, 0.9m, 1m, 1.1m, 1.2m, 1.3m & 1.4m

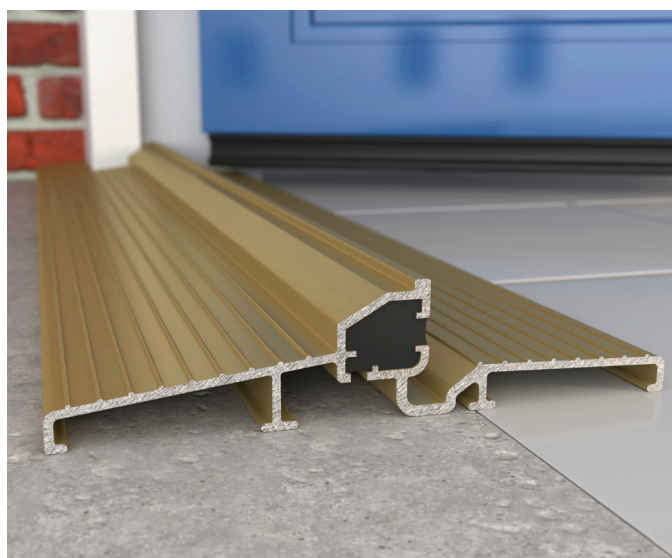


## IOR

Inward & Outward

**IOR** Ref: 1.01.0190

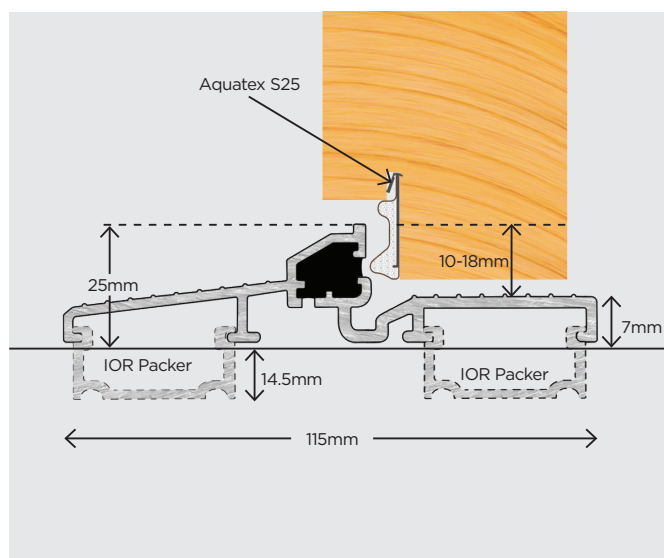
**IOR Packer** Ref: 1.01.0192



IOR Packer available separately in mill

Available in SAA & gold

In sizes from 1000mm to 4590mm



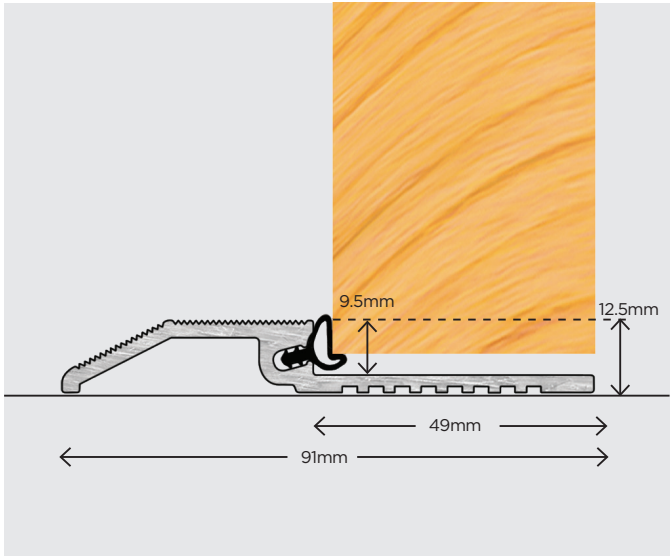


Thresholds

CDT 91

Inward & Outward  
Ref: 1.01.0453

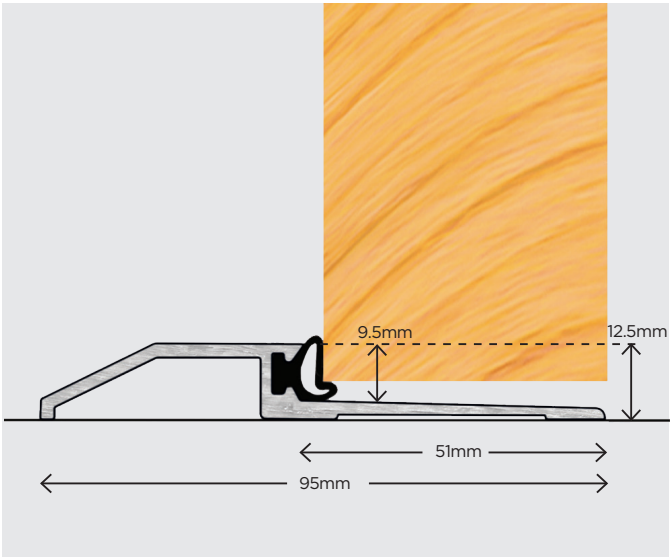
Available in mill & gold  
In sizes from 1000mm to 3000mm



CDT 95

Inward & Outward  
Ref: 1.01.0448

Available in mill & gold  
In sizes from 1000mm to 3000mm





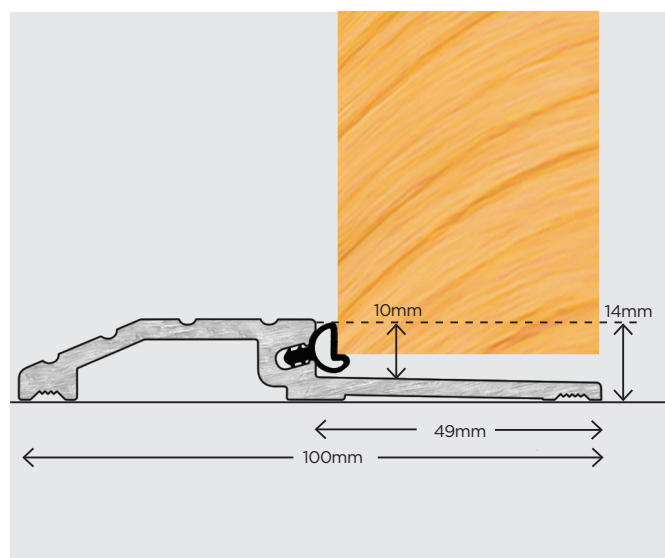
## CDT 100

Inward & Outward

Ref: 1.01.0458

Available in mill

In size 3600mm



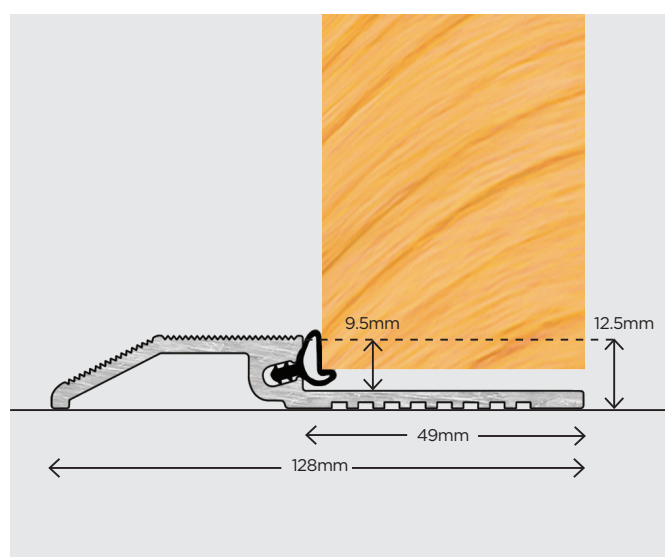
## CDT 128

Inward & Outward

Ref: 1.01.0454

Available in mill

In sizes from 1000mm to 3000mm



## Thresholds

### MXS 15

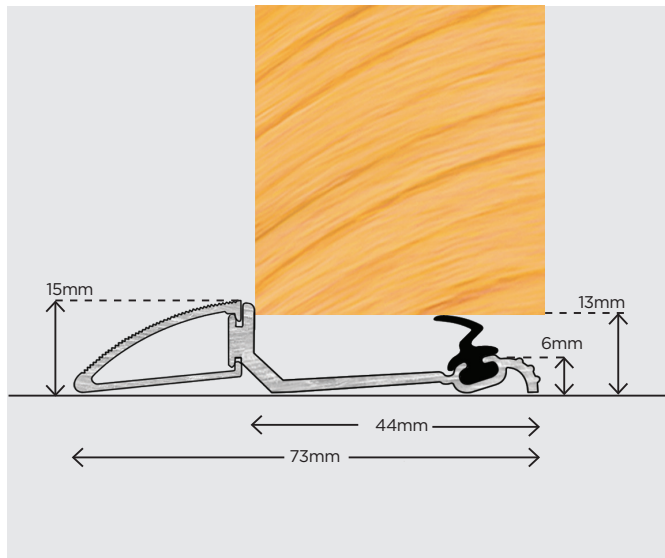
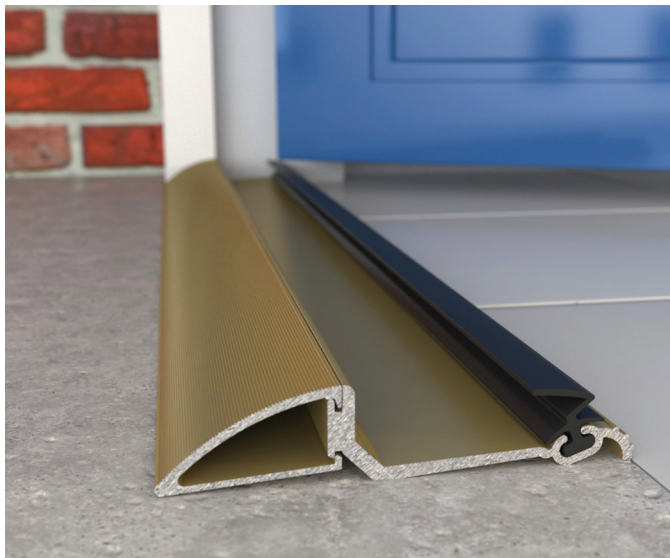
Inward

Ref: 1.01.0315

Detachable ramp eliminates the need for notching

Available in mill & gold

In sizes from 914mm to 4590mm



### MXS 15/2

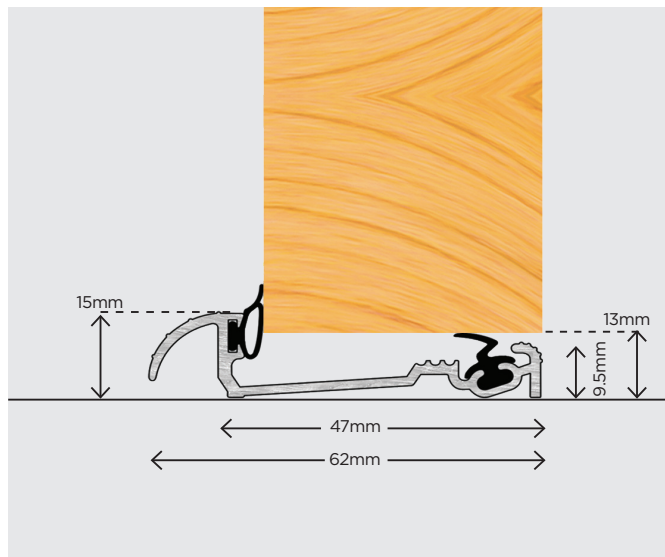
Inward

Ref: 1.01.0317

Accepts MWK striker block for flush bolts in double doors

Available in mill, gold & black

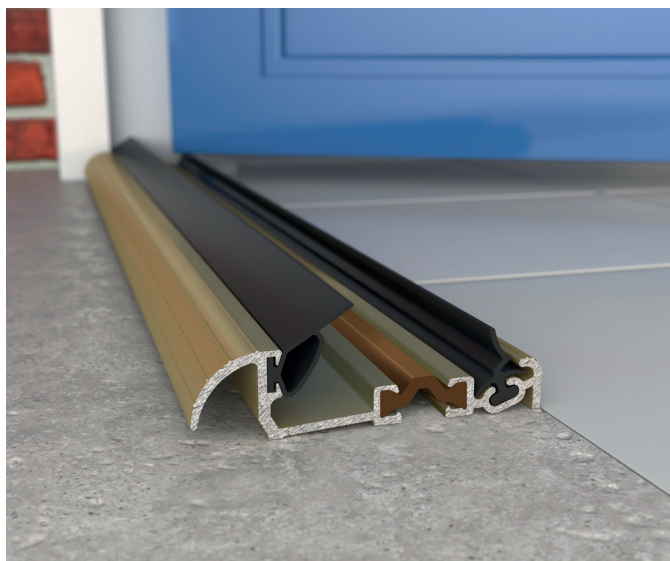
In sizes from 914mm to 4590mm



## MXS 15/2/TB

Inward

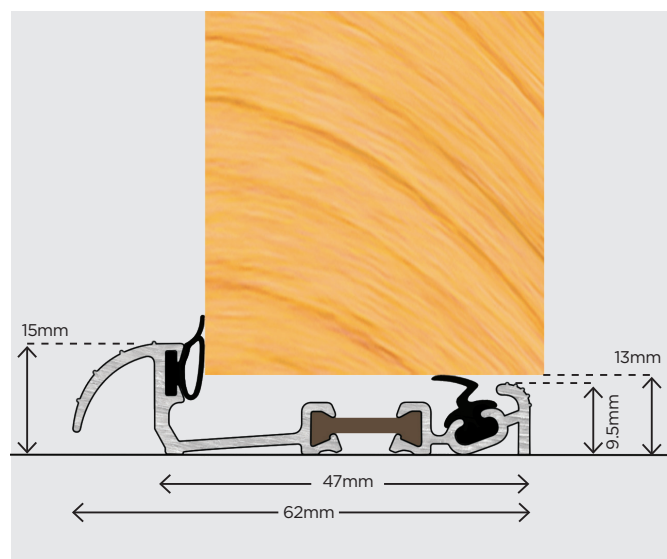
Ref: 1.01.0760



Available in mill, gold & black

In sizes from 914mm to 4590mm

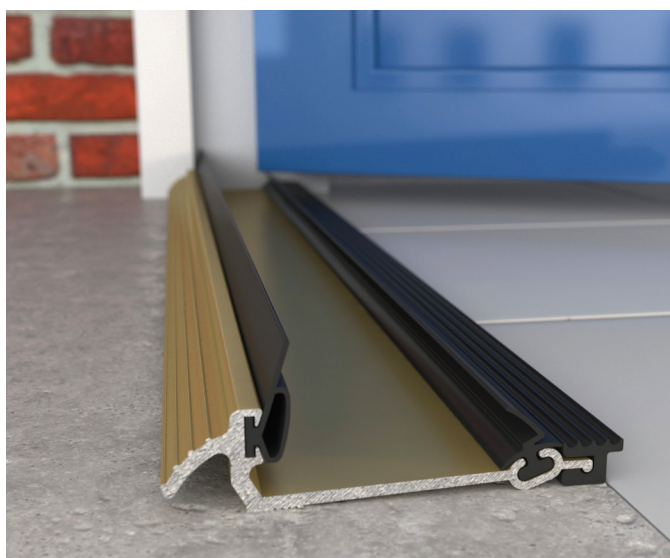
Thermally broken prevents condensation



## MXS 15/4

Inward

Ref: 1.01.0313

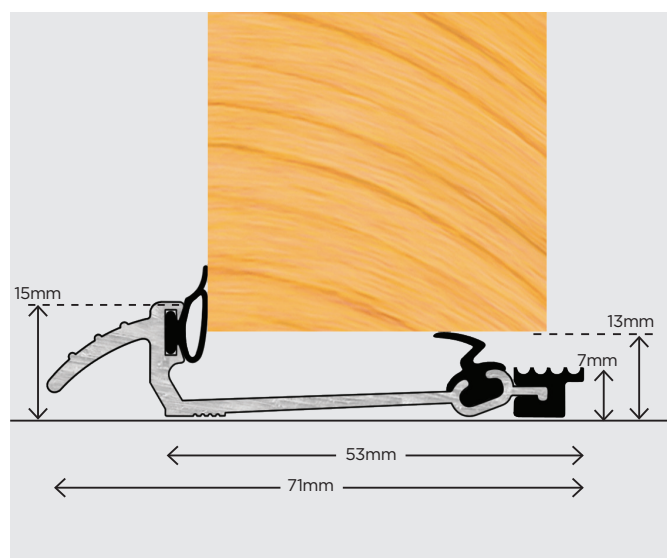


Accepts MWK striker block for flush bolts in double doors

Rear thermal barrier prevents condensation

Available in mill & gold

In sizes from 1000mm to 4590mm





## Thresholds

### MXS 15/56

Inward

Ref: 1.01.0314

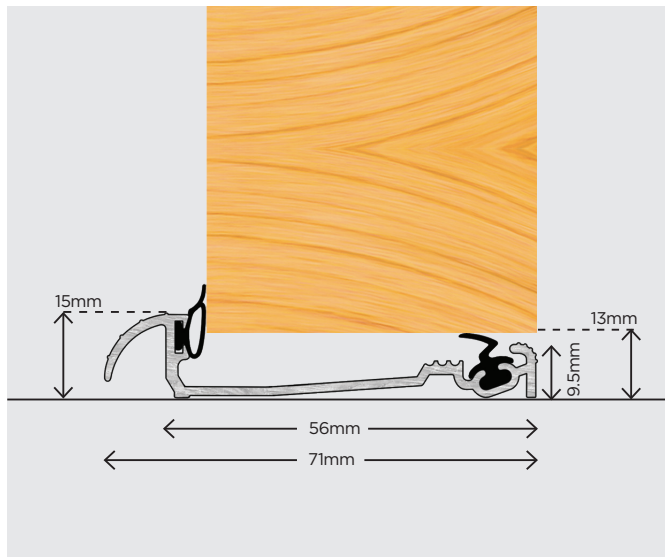


Designed for 56mm thick doors

Accepts MWK striker block for flush bolts in double doors

Available in mill, gold & black

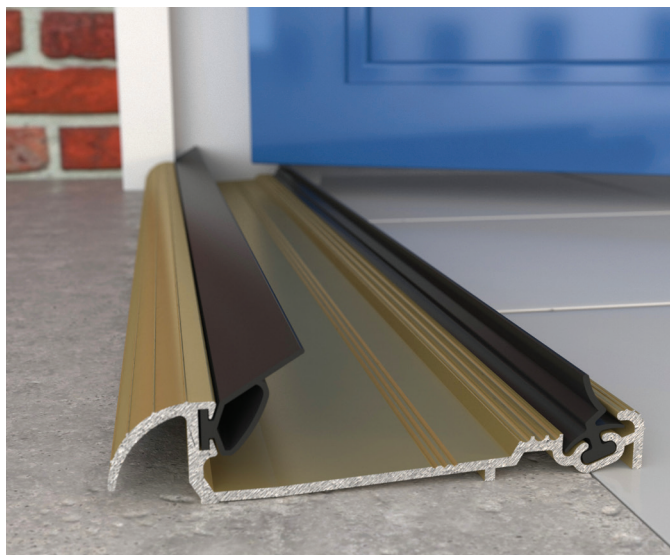
In sizes from 914mm to 4590mm



### MXS 15/68

Inward

Ref: 1.01.0312

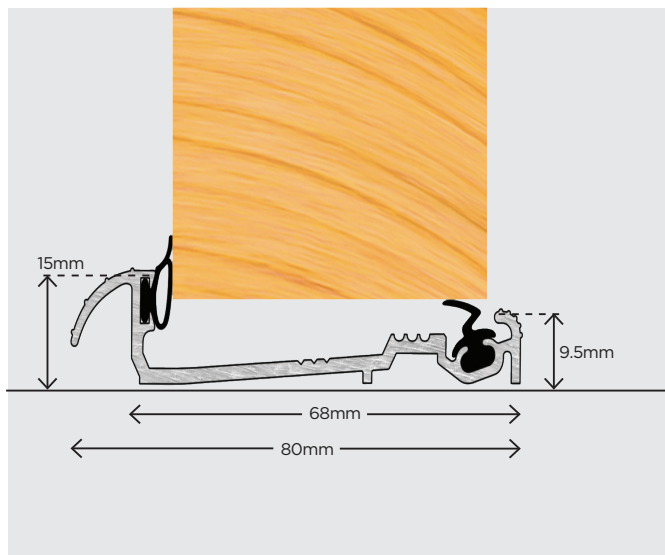


Designed for 56mm thick doors

Accepts MWK striker block for flush bolts in double doors

Available in mill & gold

In sizes from 914mm to 4590mm





## Auto Seal

Inward

Ref: 1.01.0016

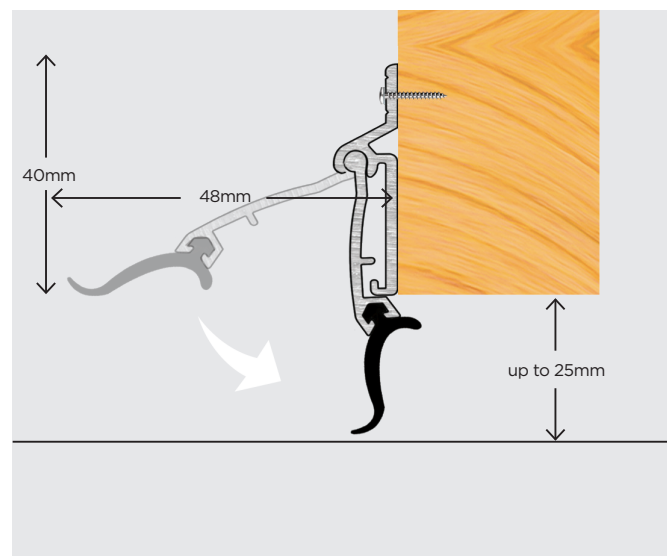


An automatic rise & fall draught excluder

Barrier free access ideal for wheelchairs

Available in gold & SAA

In sizes from 914mm to 1220mm



## MDS 25/5/2/TB

Inward

Ref: 1.01.0750



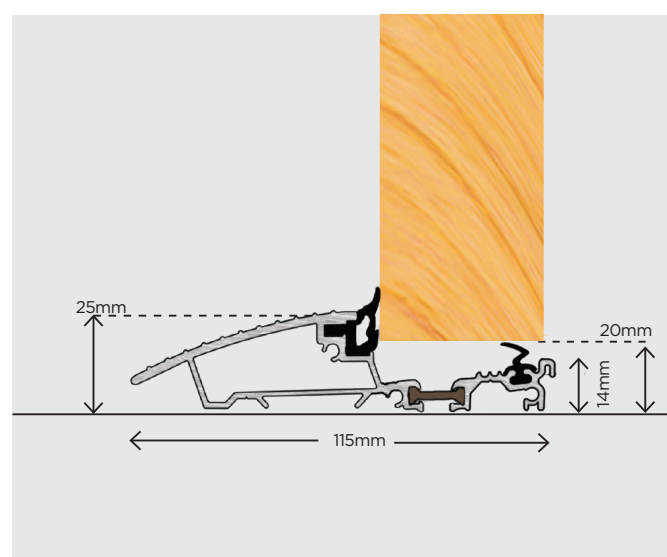
Accepts MWK striker block for flush bolts in double doors

Thermally broken prevents condensation

Optional rear ramp available separately

Available in gold & SAA

In sizes from 1000mm to 4590mm

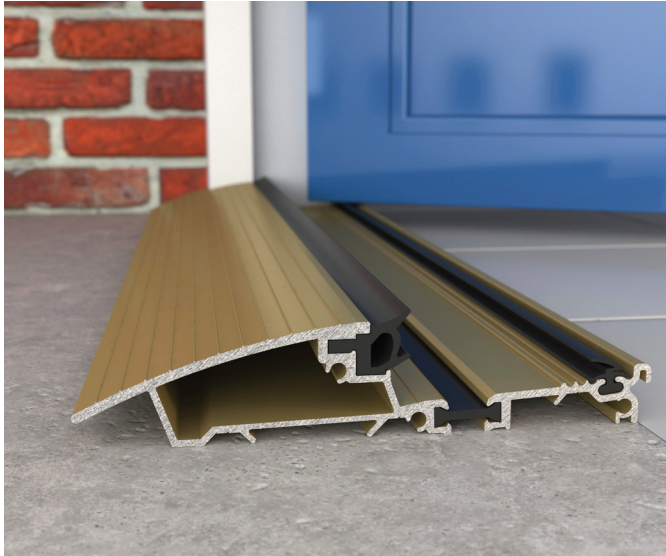


## Thresholds

### MDS 25/58

Inward

Ref: 1.01.0751



Accepts MWK striker block for flush bolts in double doors

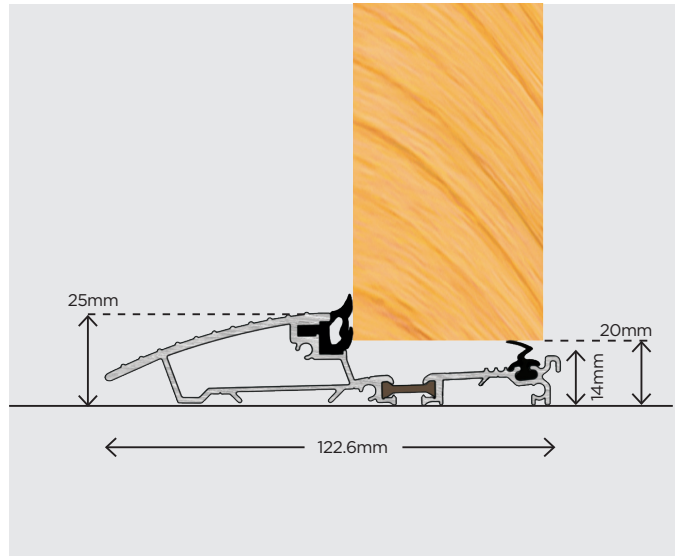
Thermally broken prevents condensation

Optional rear ramp available separately

Suitable for 58mm doors

Available in gold & SAA

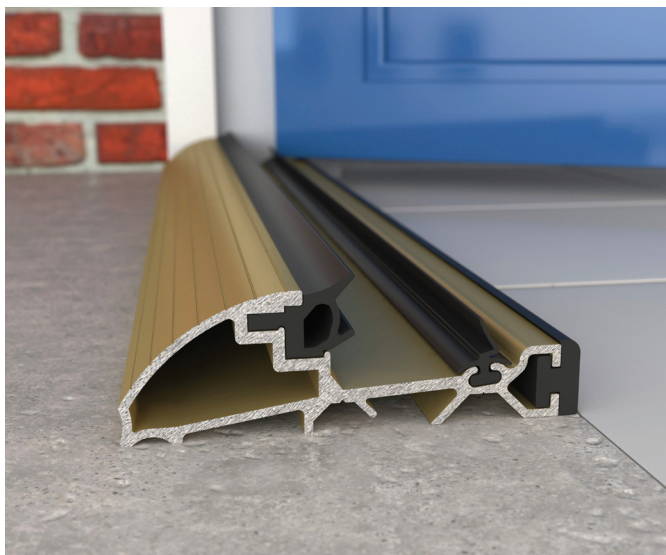
In sizes from 1000mm to 4590mm



### MDS 80

Inward

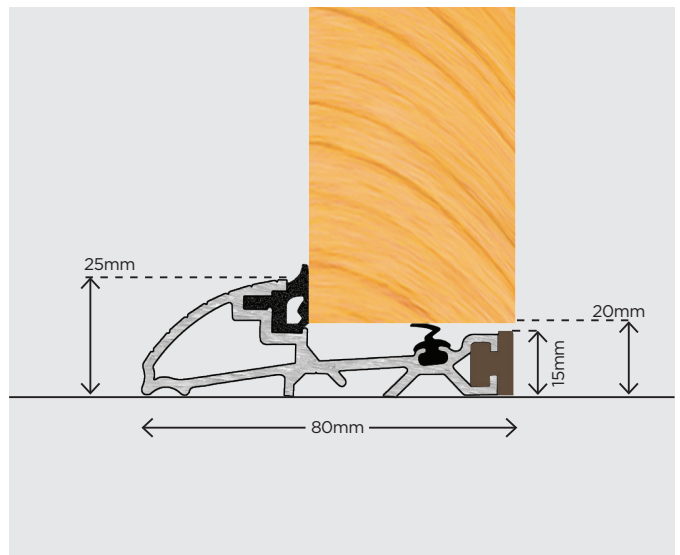
Ref: 1.01.0264



Rear thermal barrier prevents condensation

Available in gold & SAA

In sizes from 914mm to 4590mm



## MDS 80/2 TB

Inward

Ref: 1.01.0754



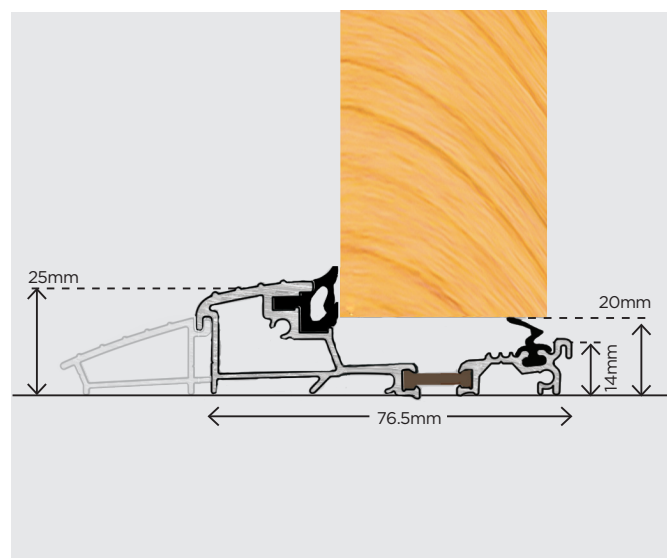
Optional front & rear ramp available separately

Accepts MWK striker block for flush bolts in double doors

Thermally broken prevents condensation

Available in gold & SAA

In sizes from 1000mm to 4590mm



## MDS 80/2/58

Inward

Ref: 1.01.0753



Optional front & rear ramp available separately

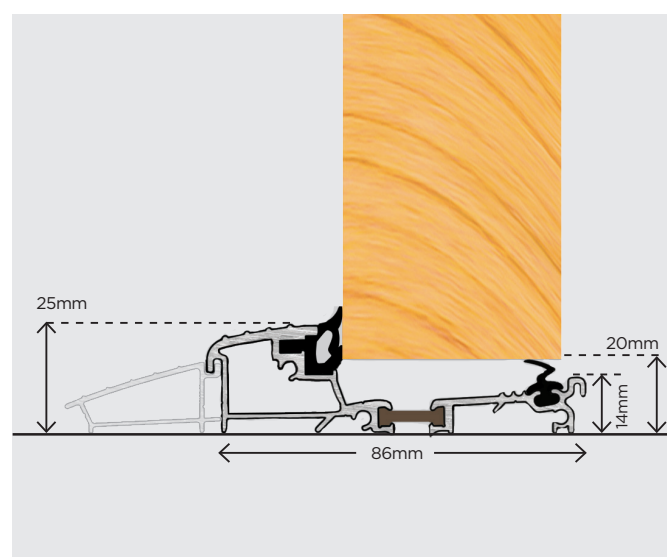
Accepts MWK striker block for flush bolts in double doors

Thermally broken prevents condensation

Suitable for 58mm doors

Available in gold & SAA

In sizes from 1000mm to 4590mm





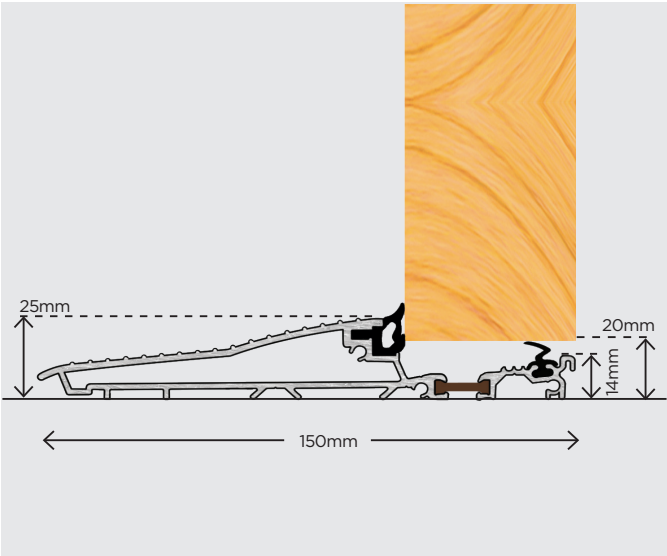
Thresholds

MDS 150/TB

Inward  
Ref: 1.01.0756



- Accepts MWK striker block for flush bolts in double doors
- Thermally broken prevents condensation
- Optional rear ramp available separately
- Available in gold & SAA
- In sizes from 1000mm to 4590mm

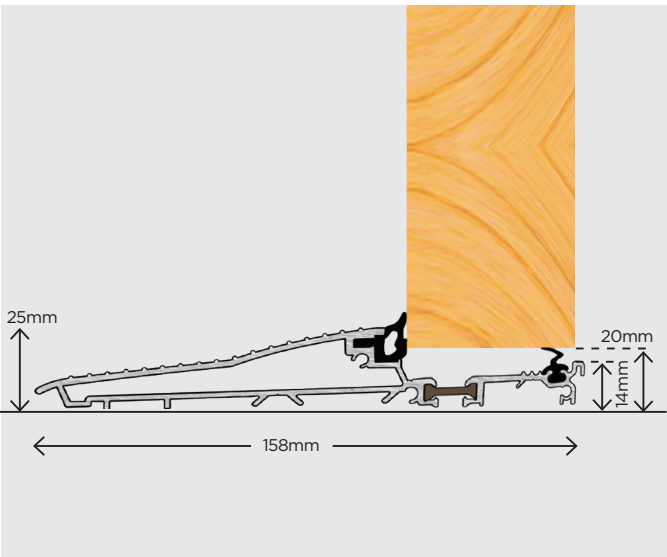


MDS 150/58

Inward  
Ref: 1.01.0761



- Accepts MWK striker block for flush bolts in double doors
- Thermally broken prevents condensation
- Optional rear ramp available separately
- Suitable for 58mm doors
- Available in gold & SAA
- In sizes from 1000mm to 4590mm





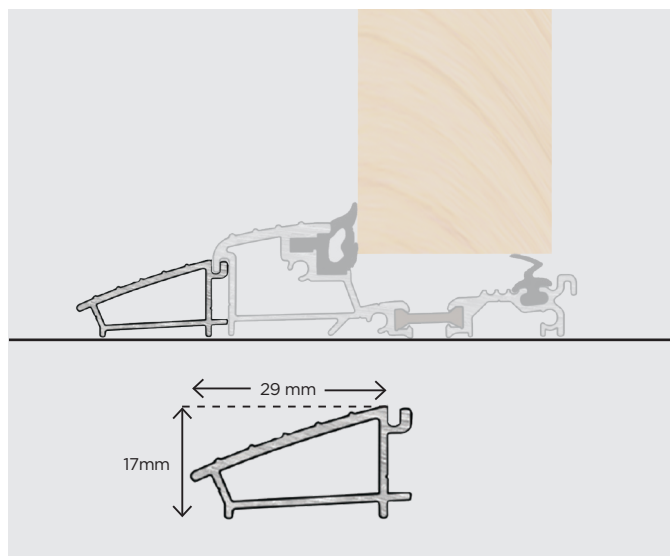
## MDS 80/2 Front Ramp

Suitable for MDS 80/2

Available in gold & SAA

In sizes from 914mm to 4590mm

Ref: 1.01.0763



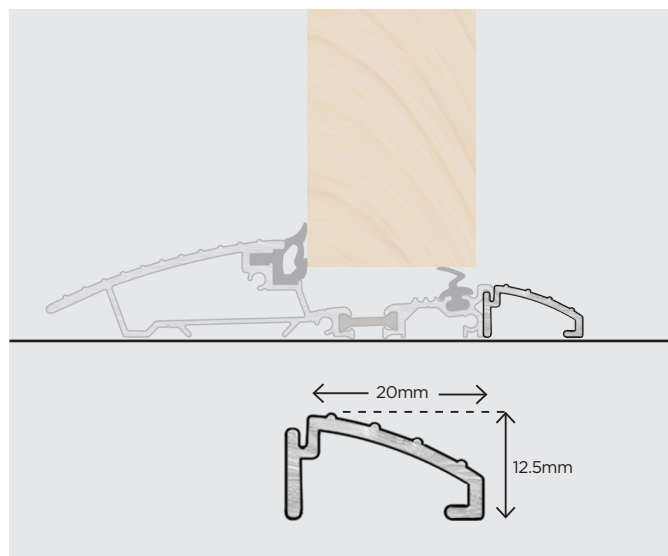
## MDS Rear Ramp

Suitable for MDS 25, MDS 80/2 & MDS 150

Available in gold & SAA

In sizes from 914mm to 4590mm

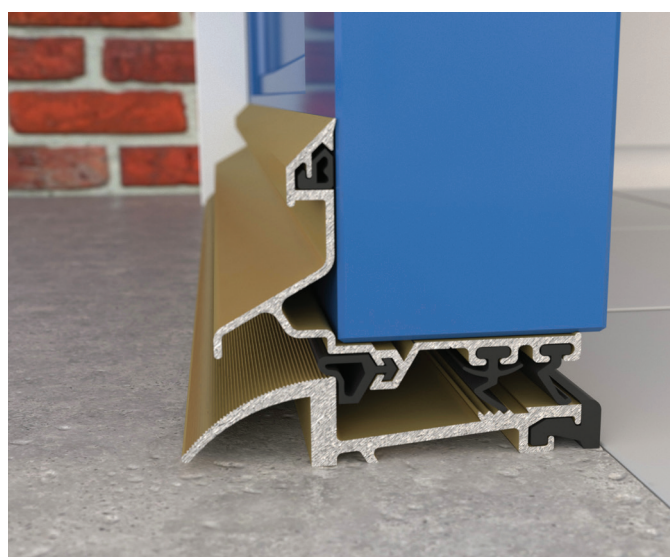
Ref: 1.01.0762



## MWK 20

Inward

Ref: 1.01.0280

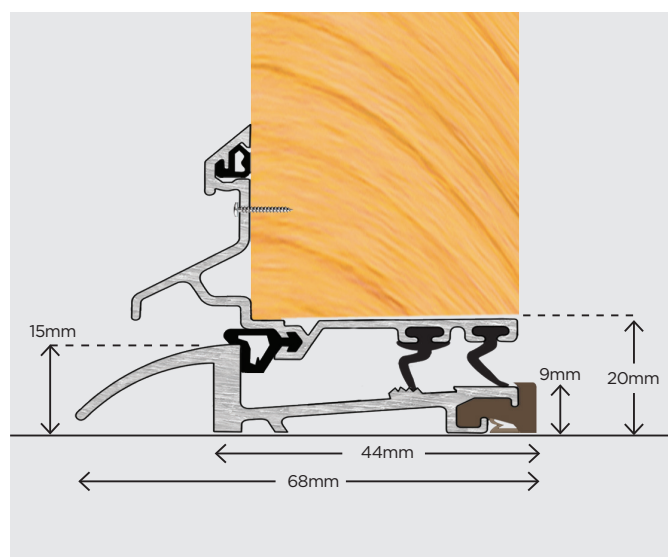


No seals underfoot to be damaged by foot traffic

Rear thermal barrier prevents condensation

Available in mill, gold, bronze & black

In sizes from 914mm to 4590mm

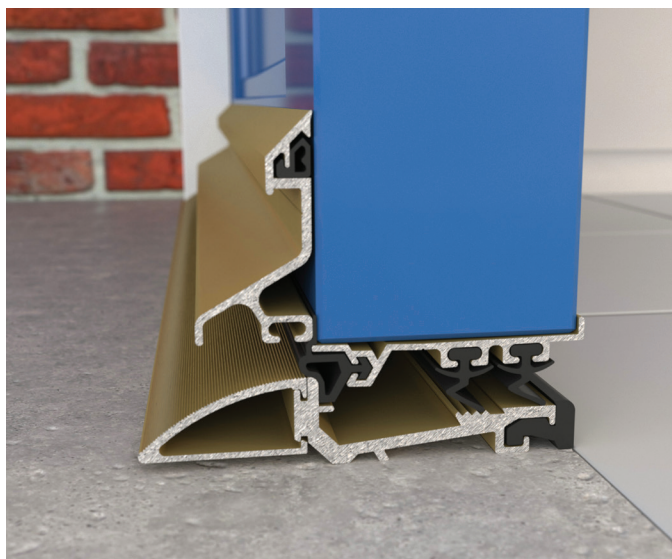


## Thresholds

### MWK R/2/20

Inward

Ref: 1.01.0286

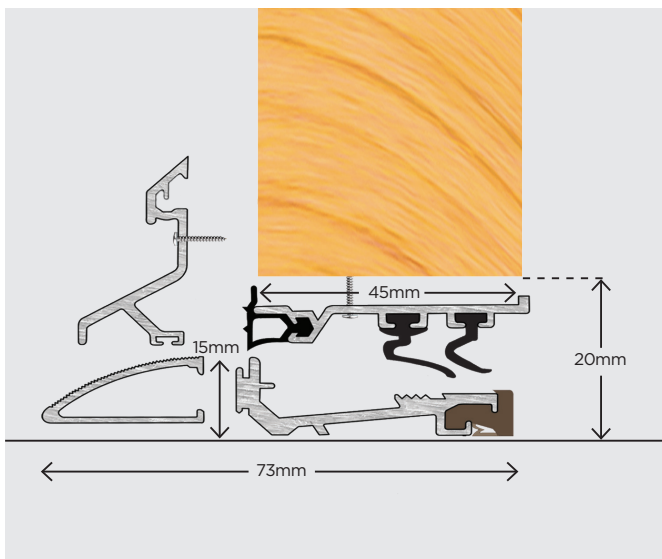


Separate components eliminates need for notching

Rear thermal barrier prevents condensation

Available in mill & gold

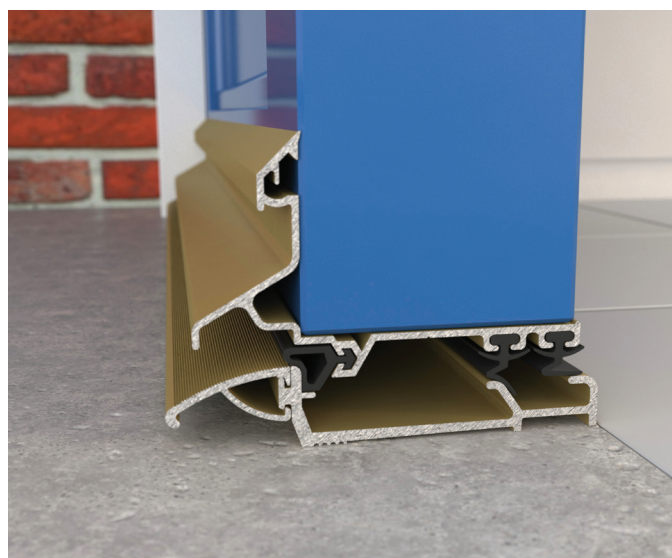
In sizes from 914mm to 4590mm



### MWK R/20/56

Inward

Ref: 1.01.0490



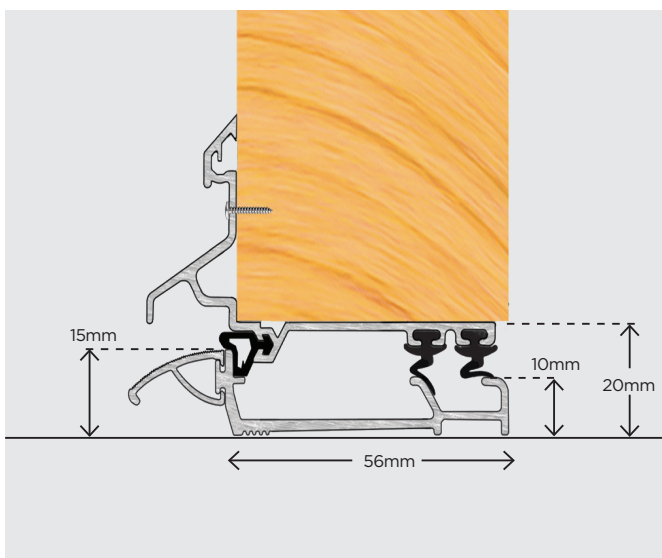
Designed for 56mm thick doors

No seals underfoot to be damaged by foot traffic

Detachable front ramp eliminates need for notching

Available in mill & gold

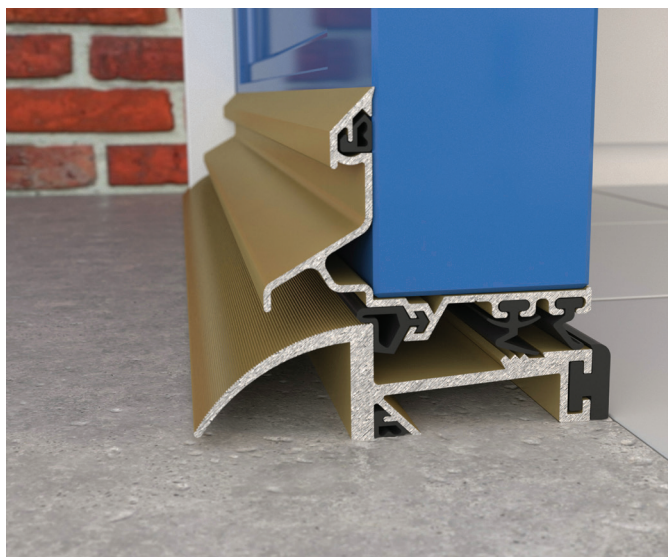
In sizes from 914mm to 4590mm



## MWK 25

Inward

Ref: 1.01.0290

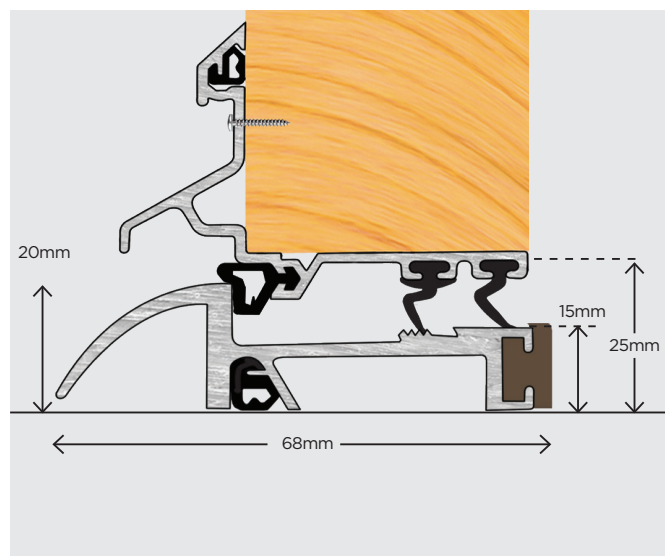


No seals underfoot to be damaged by foot traffic

Rear thermal barrier prevents condensation

Available in mill & gold

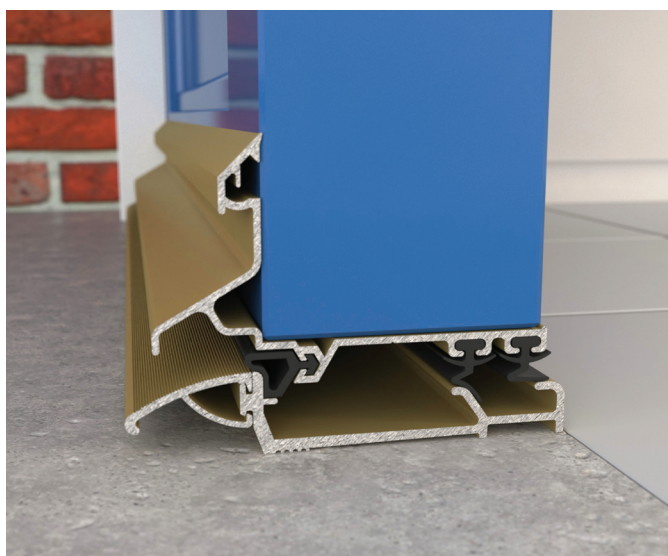
In sizes from 914mm to 4590mm



## MWK R/2/25/MK2

Inward

Ref: 1.01.0460

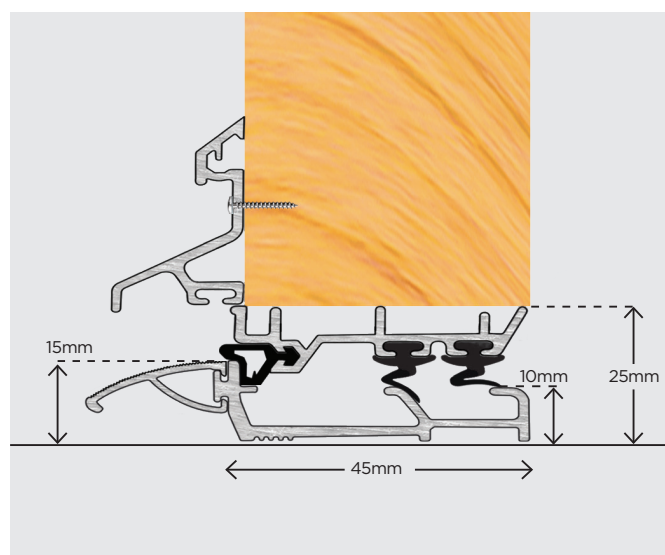


No seals underfoot to be damaged by foot traffic

Detachable front ramp eliminates need for notching

Available in mill & gold

In sizes from 914mm to 4590mm



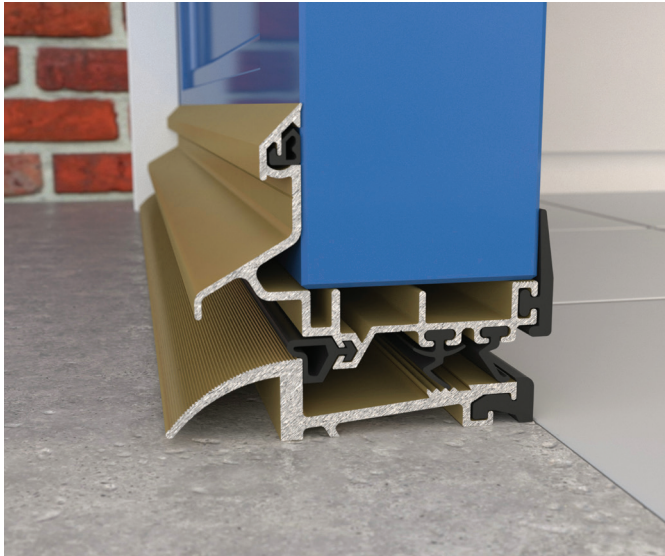


## Thresholds

### MWK 27

Inward

Ref: 1.01.0297

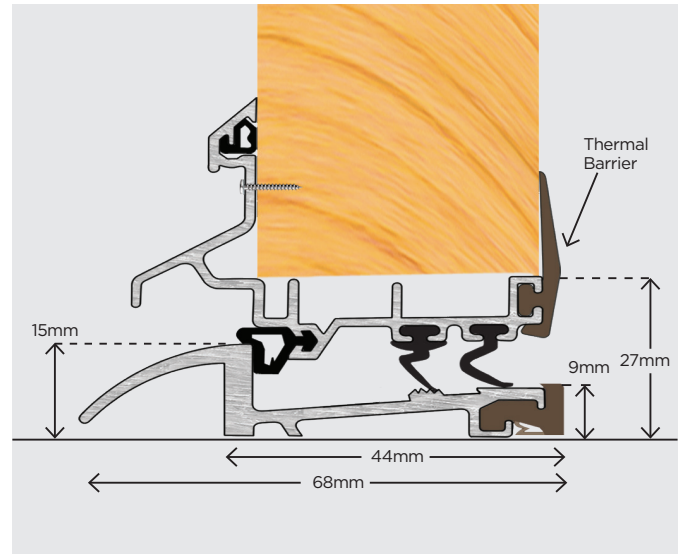


No seals underfoot to be damaged by foot traffic

Rear thermal barrier prevents condensation

Available in mill & gold

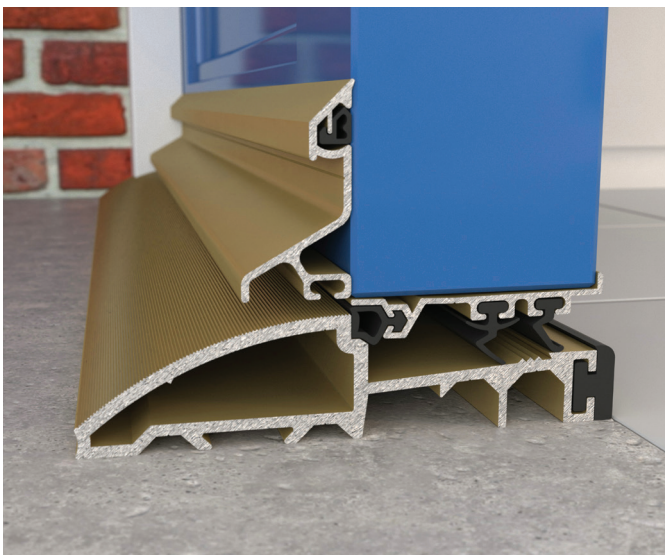
In sizes from 914mm to 4590mm



### MWK 95

Inward

Ref: 1.01.0295

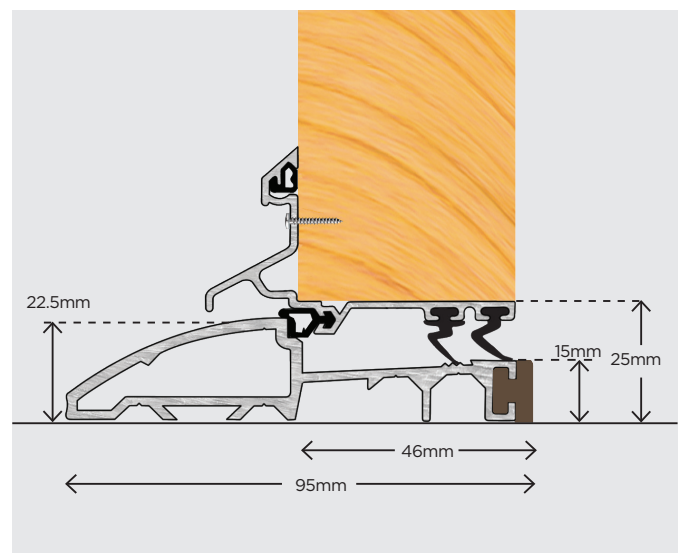


No seals underfoot to be damaged by foot traffic

Rear thermal barrier prevents condensation

Available in mill & gold

In sizes from 914mm to 4590mm

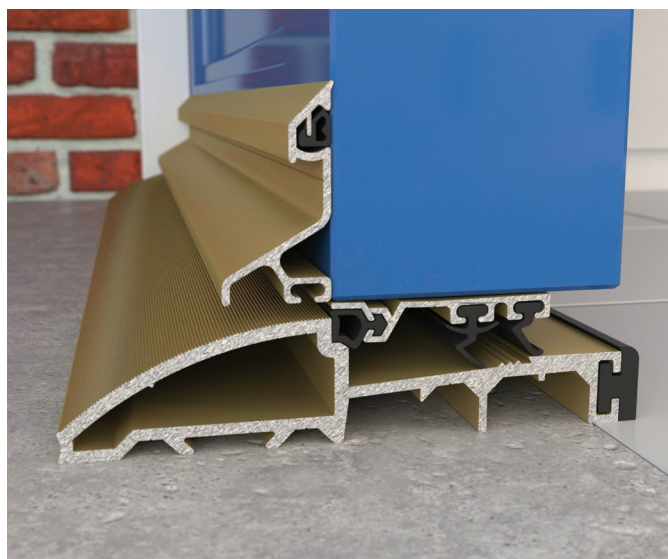




## MWK 104

Inward

Ref: 1.01.0296



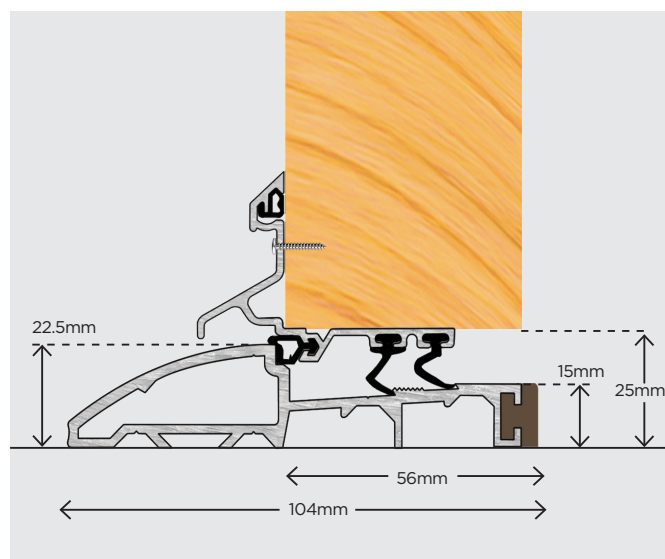
Designed for 56mm thick doors

No seals underfoot to be damaged by foot traffic

Rear thermal barrier prevents condensation

Available in mill & gold

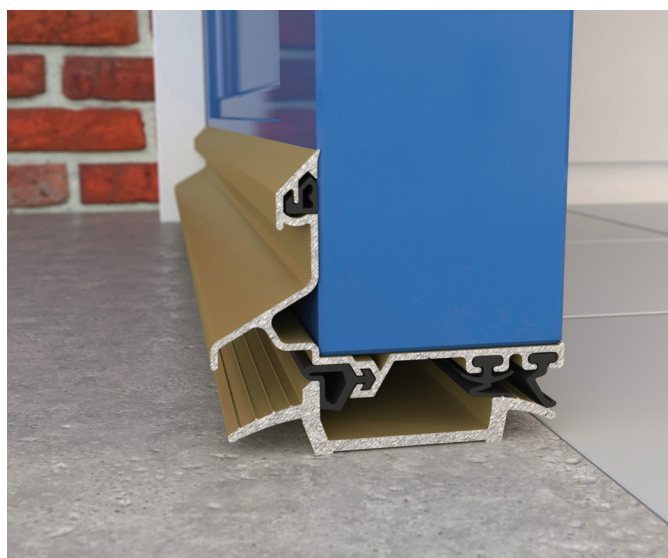
In sizes from 914mm to 4015mm



## IOS/I

Inward

Ref: 1.01.0700

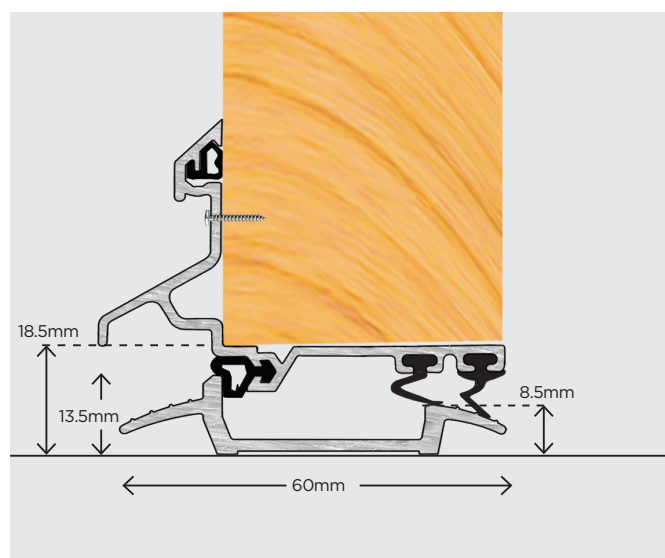


No seal underfoot to be damaged by foot traffic

Deflector & seal carrier available separately (optional)

Available in mill & gold

In sizes from 914mm to 4590mm

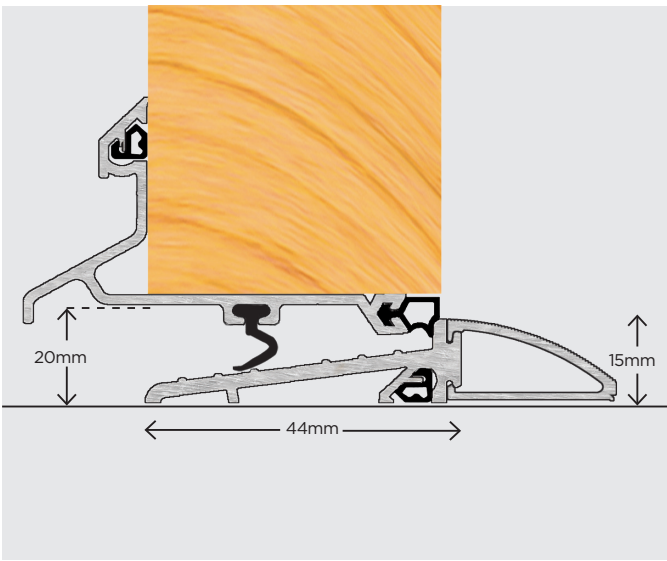
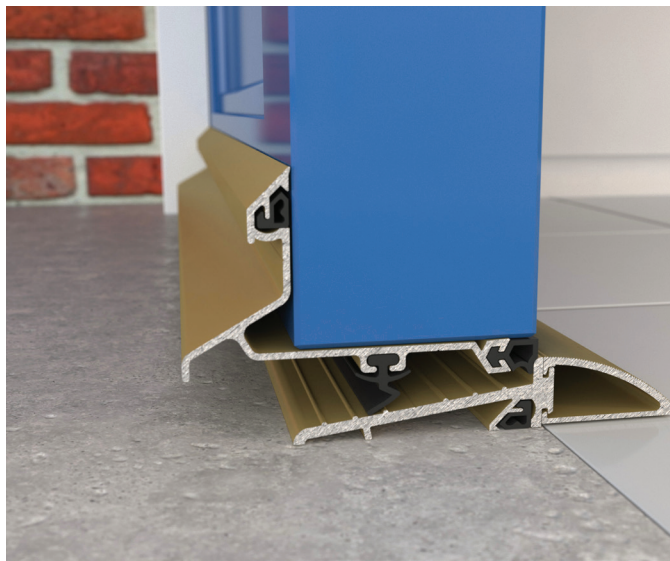


Thresholds

OUM

Outward  
Ref: 1.01.0330

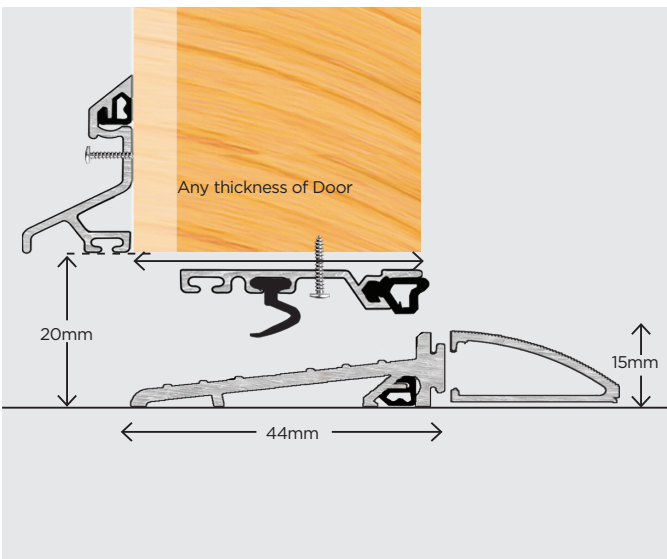
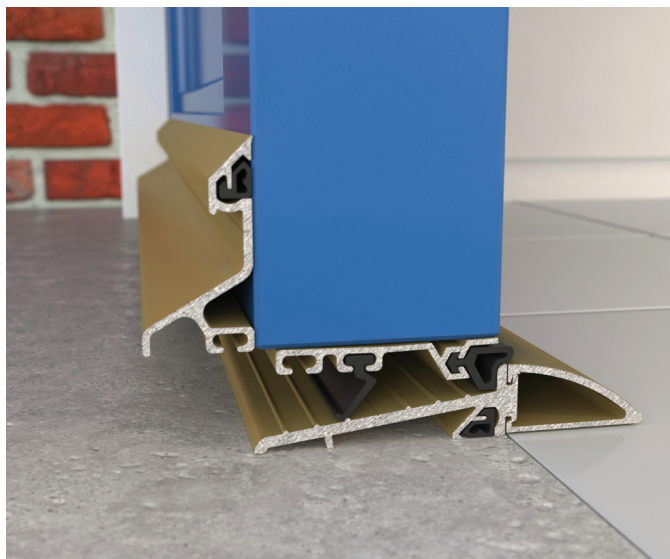
No seals underfoot to be damaged by foot traffic  
Available in mill & gold  
In sizes from 914mm to 4590mm



OUM TD

Outward  
Ref: 1.01.0331

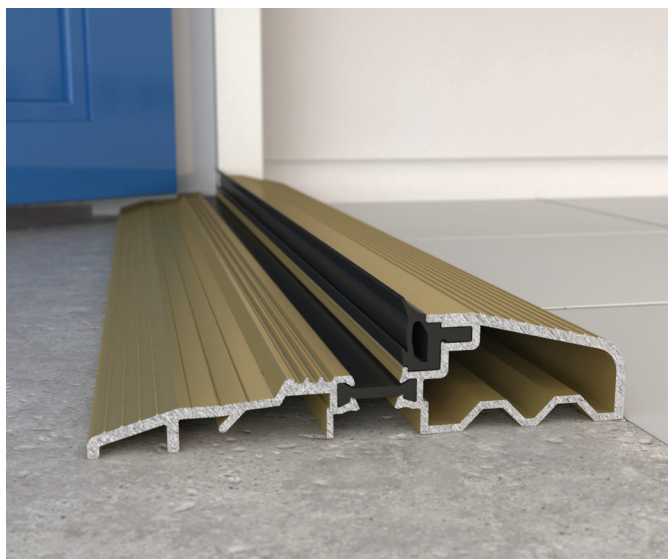
Designed for doors 44mm thick & over  
Separate deflector & seal carrier  
Available in mill & gold  
In sizes from 914mm to 4590mm



## OUM 2/TB

Outward

Ref: 1.01.0759

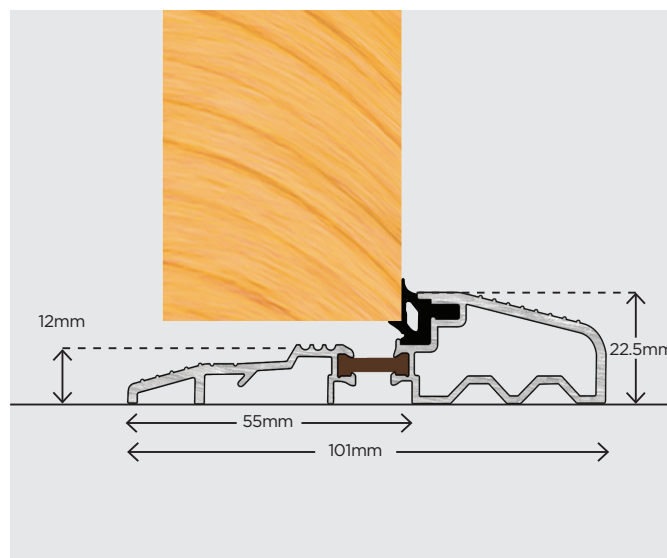


Thermally broken prevents condensation

Available in gold & SAA

In sizes from 1000mm to 4590mm

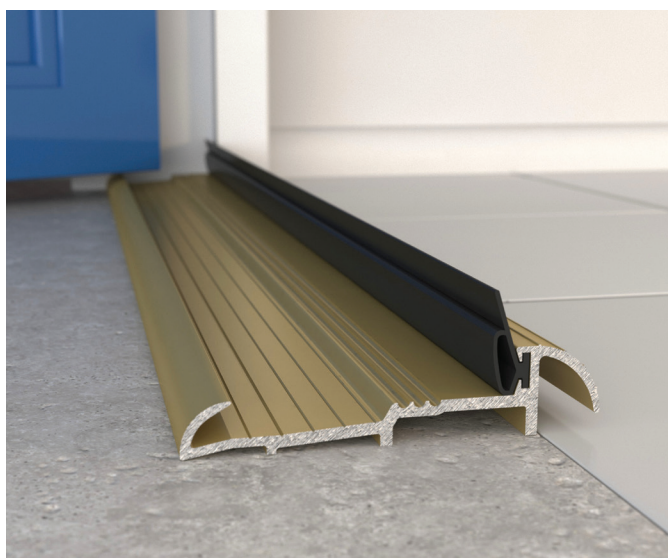
Accepts MWK striker block for flush bolts in double doors



## OUM 4

Outward

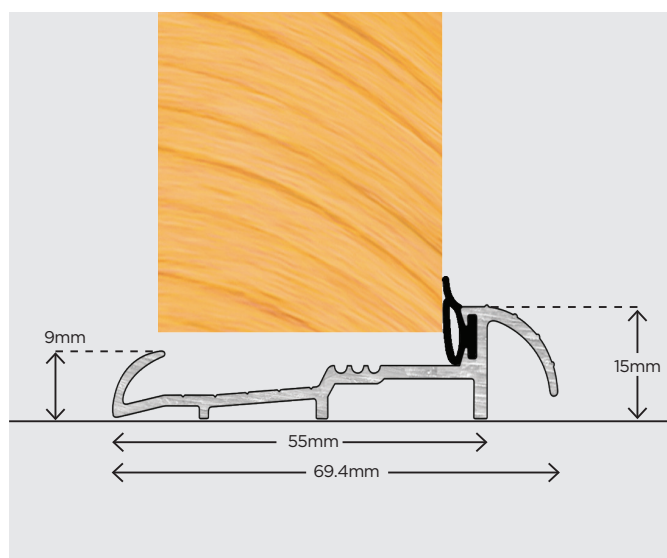
Ref: 1.01.0339



Accepts MWK striker block for flush bolts in double doors

Available in mill, gold & black

In sizes from 914mm to 4590mm



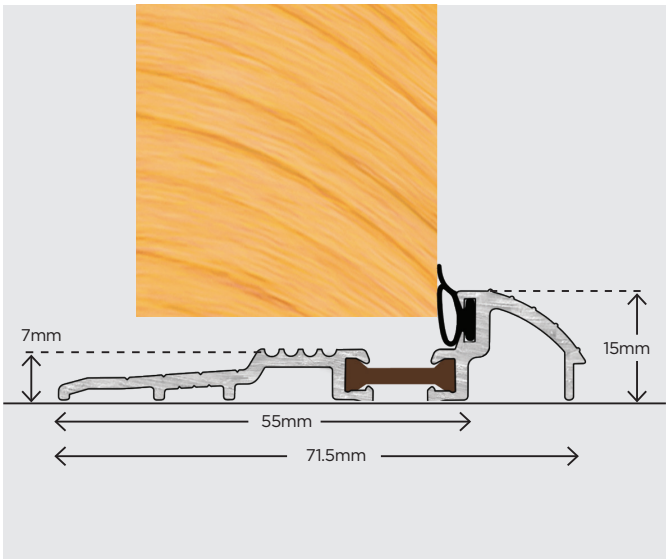
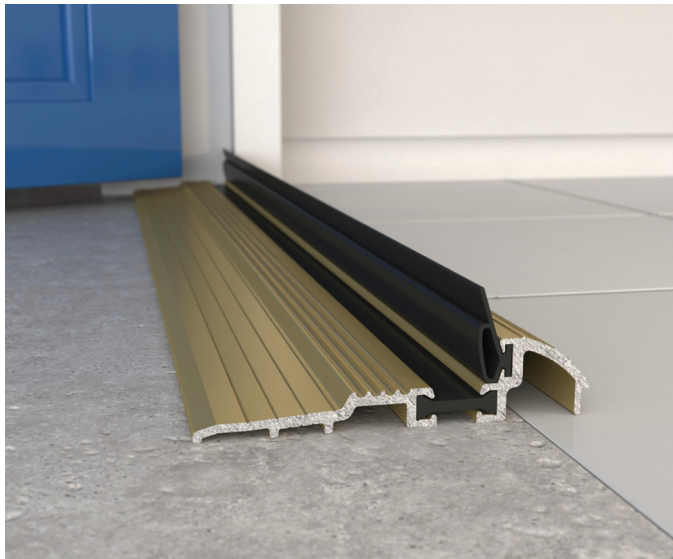


Thresholds

OUM 5/TB

Outward  
Ref: 1.01.0758

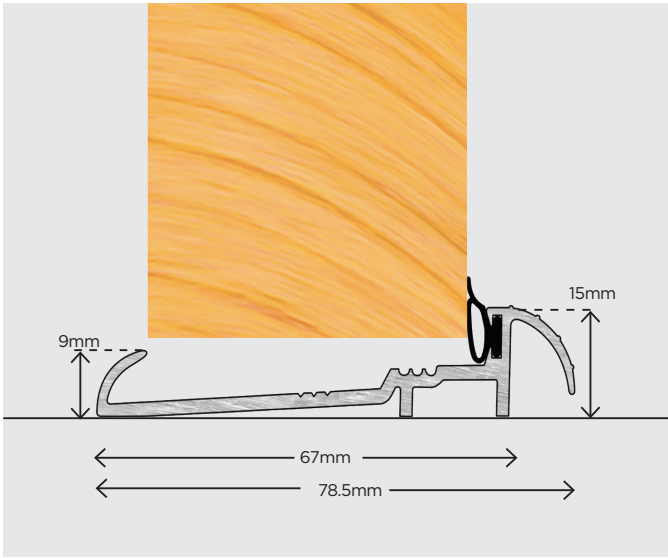
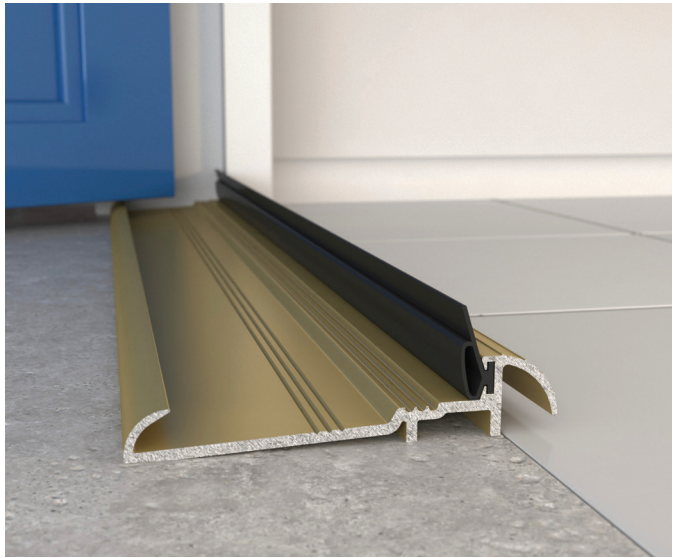
Accepts MWK striker block for flush bolts in double doors  
Thermally broken prevents condensation  
Available in mill & gold  
In sizes from 1000mm to 4590mm



OUM 6

Outward  
Ref: 1.01.0343

Accepts MWK striker block for flush bolts in double doors  
Designed for doors 56mm thick and over  
Available in mill & gold  
In sizes from 914mm to 4590mm



## OUM 80/TB

Outward

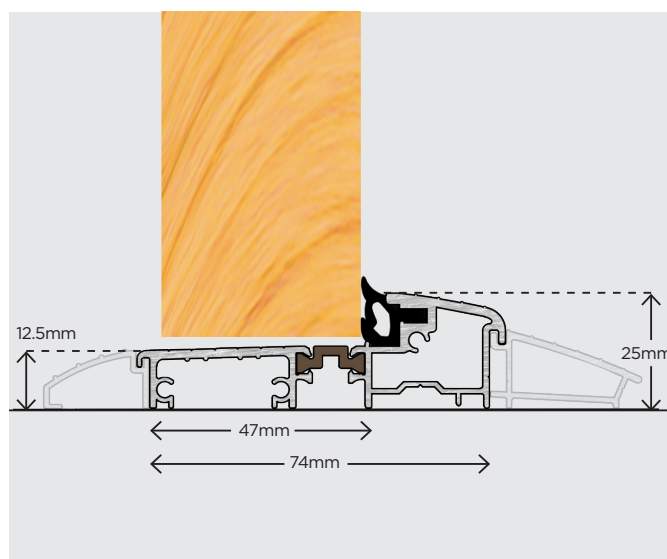
Ref: 1.01.0765

Optional front & rear ramp available separately

Thermally broken, prevents condensation

Available in gold & SAA

In sizes from 1000mm to 4590mm



## OUM 150/TB

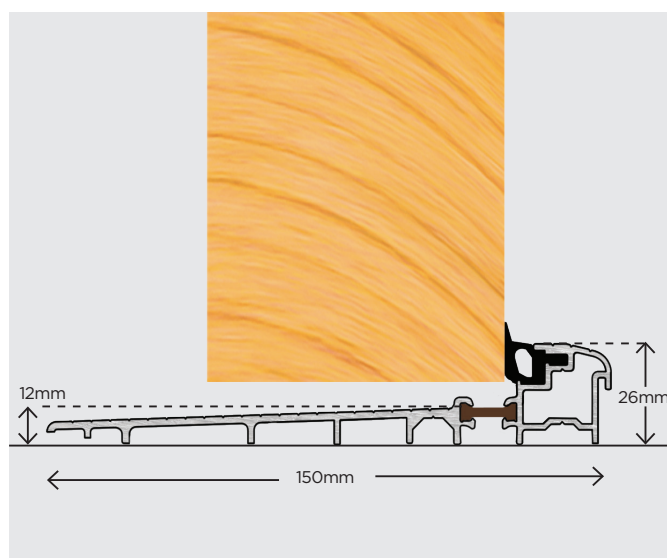
Outward

Ref: 1.01.0757

Thermally broken prevents condensation

Available in gold & SAA

In sizes from 1000mm to 4590mm



## Thresholds

### Double Sealing Sill

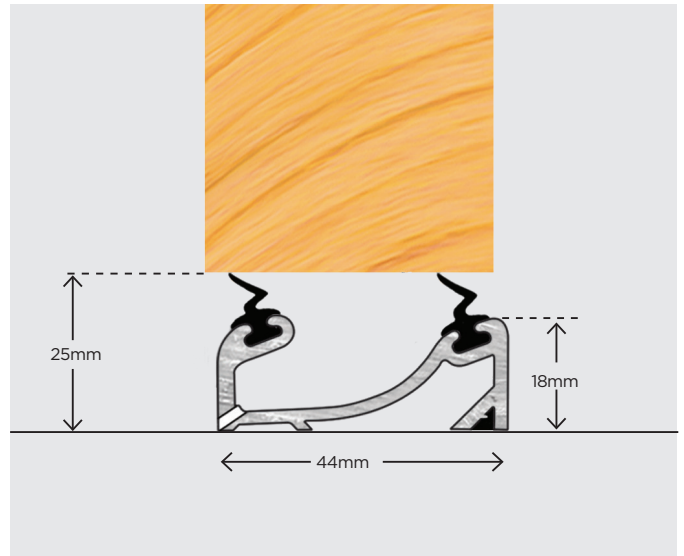
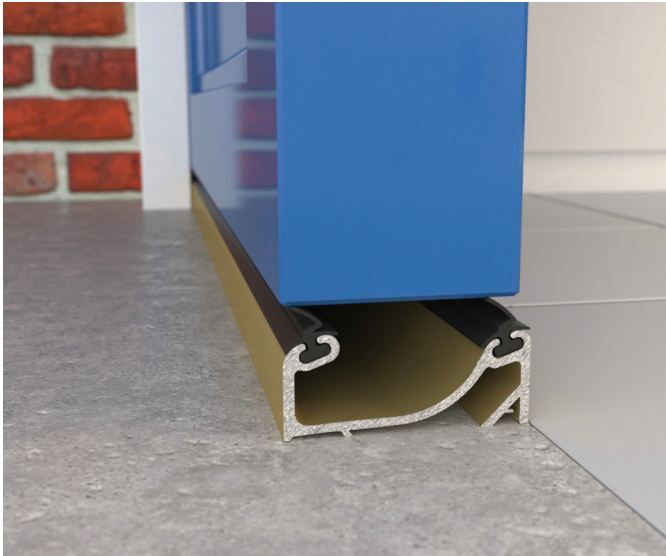
Inward & Outward

Ref: 1.01.0120

Accepts standard striker block for flush bolts in double doors

Available in mill, gold & bronze

In sizes from 914mm to 4590mm



### Adjustex

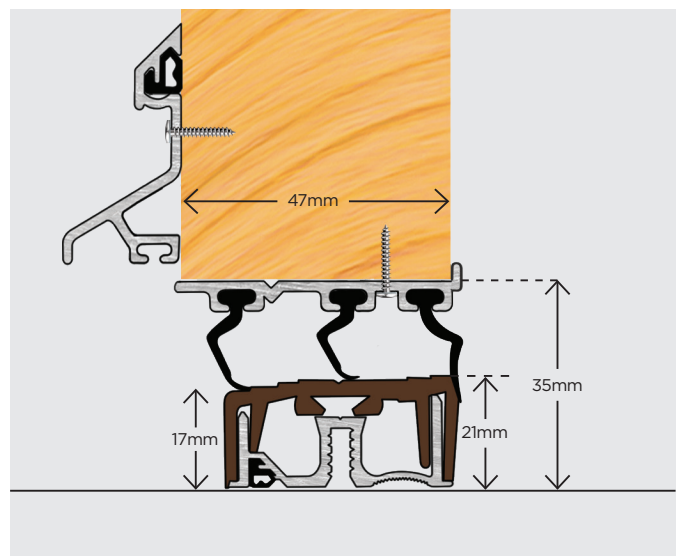
Inward & Outward

Ref: 1.01.0004

Base section allows for up to 6mm of adjustment

Available in mill & gold

In size 914mm





## Weatherten Lowline

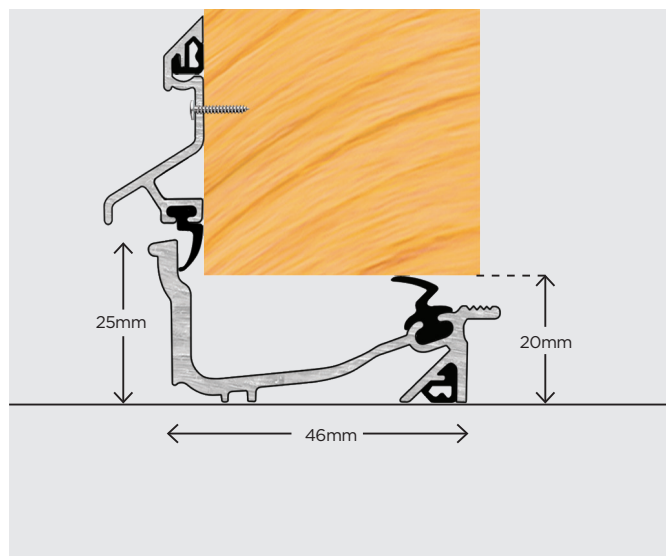
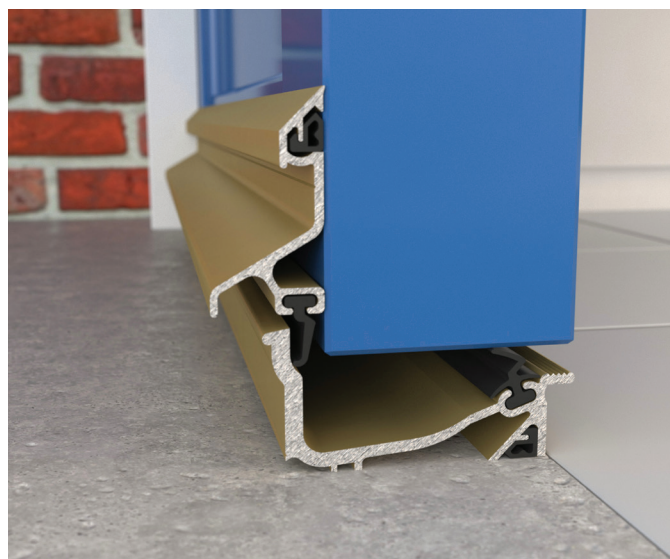
Inward

Ref: 1.01.0501

Accepts standard striker block for flush bolts in double doors

Available in mill, gold, bronze & black

In sizes from 914mm to 4590mm



## Weatherten Bar

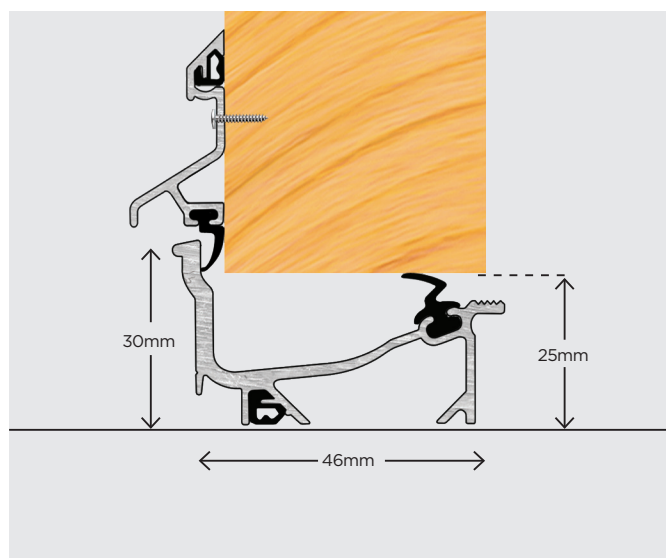
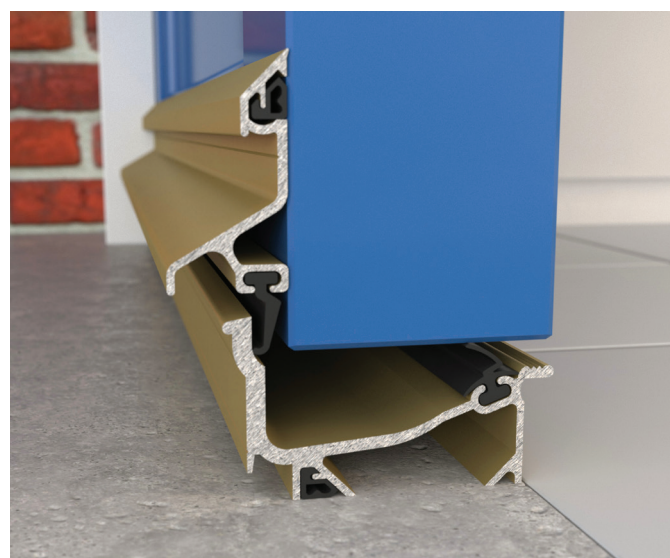
Inward

Ref: 1.01.0500

Accepts standard striker block for flush bolts in double doors

Available in mill, gold, bronze & black

In sizes from 914mm to 4590mm



## Thresholds

### Macclex Lowline

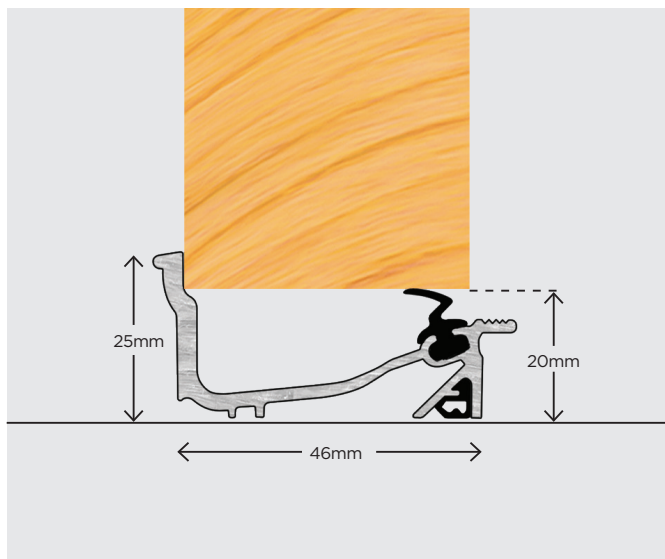
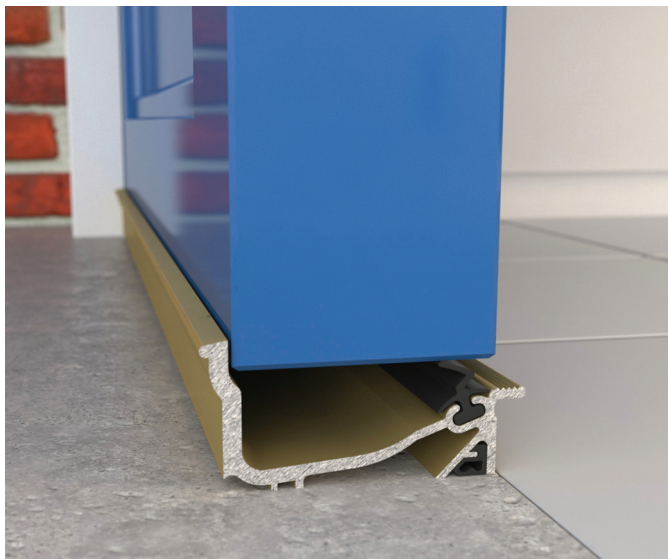
Inward

Ref: 1.01.0305

Accepts standard striker block for flush bolts in double doors

Available in mill, gold, bronze & black

In sizes from 914mm to 4590mm



### Macclex

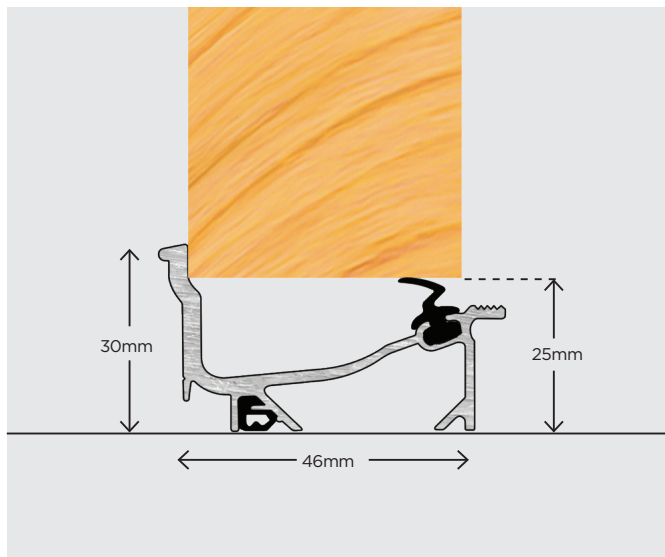
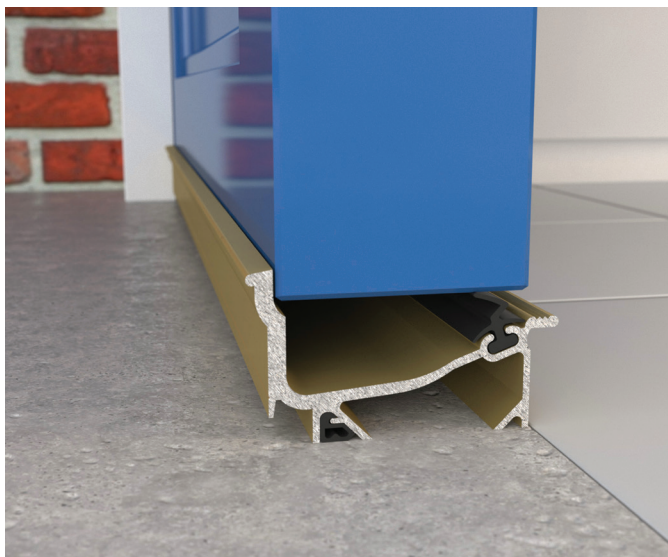
Inward

Ref: 1.01.0300

Accepts standard striker block for flush bolts in double doors

Available in mill, gold, bronze & black

In sizes from 914mm to 4590mm



## Macclex 38

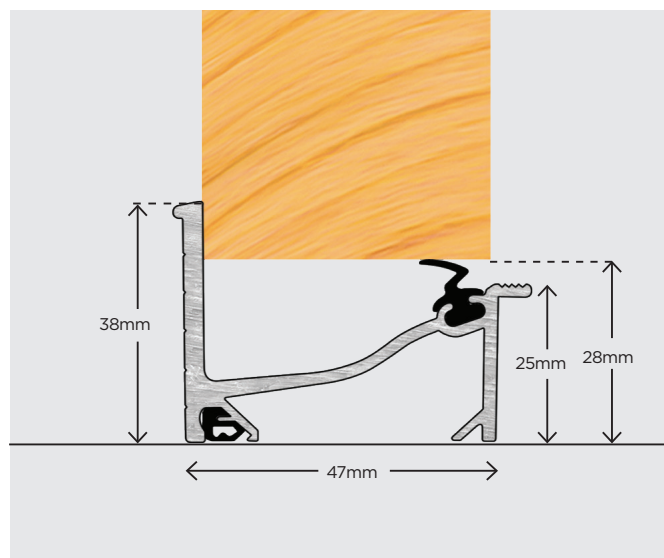
Inward

Ref: 1.01.0310

Accepts standard striker block for flush bolts in double doors

Available in mill & gold

In sizes from 914mm to 4590mm



## Bristlex

Inward

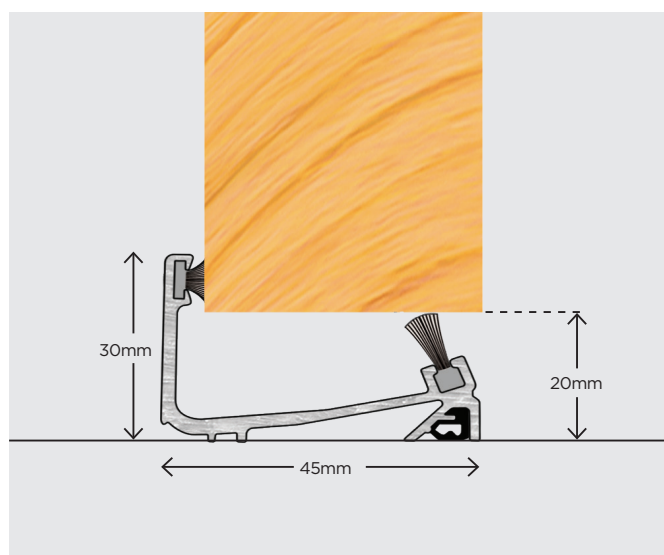
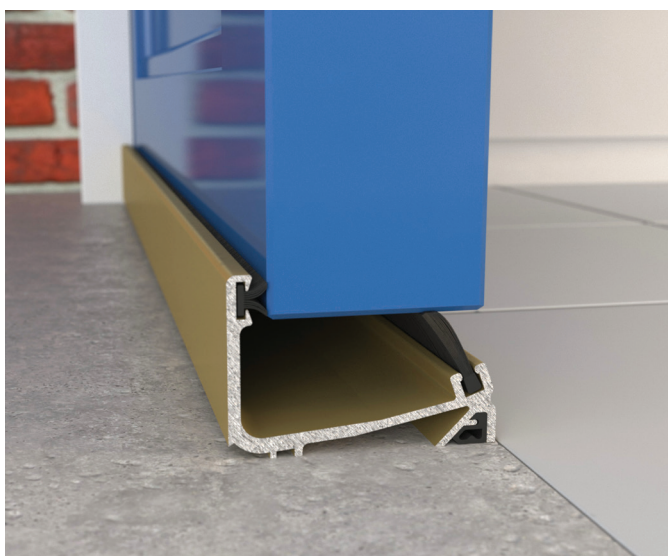
Ref: 1.01.0070

Front seal pile

Rear seal bristle

Available in mill & gold

In sizes from 914mm to 4590mm





# Thresholds

## Hi Per Bar

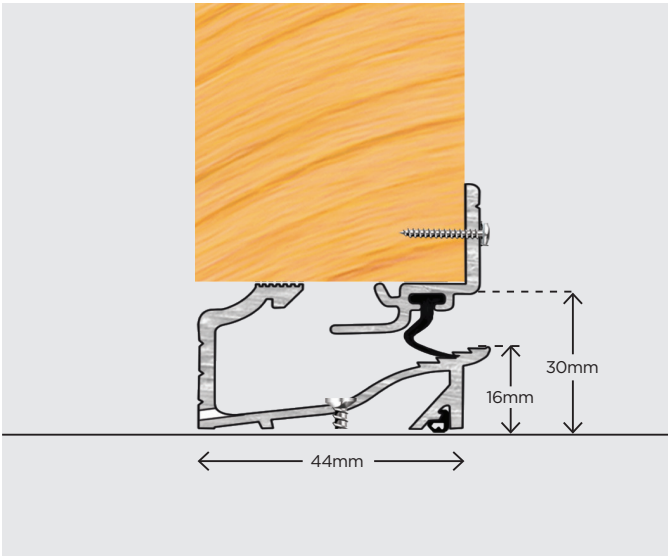
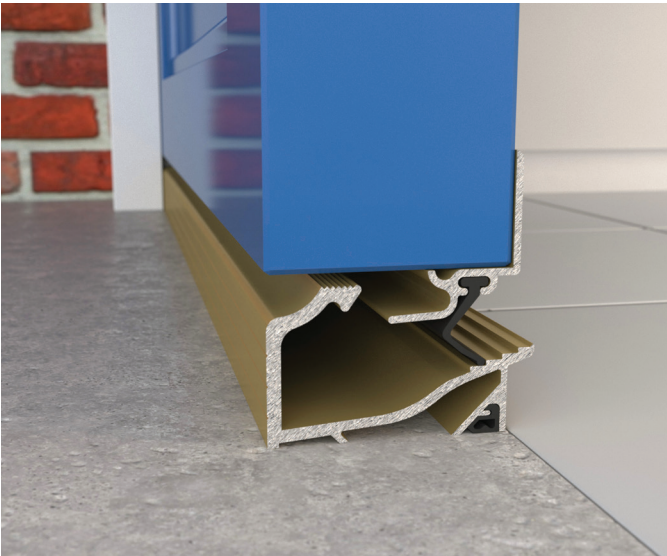
Inward

Ref: 1.01.0170

No seals underfoot to be damaged by foot traffic

Available in mill, gold, bronze & black

In sizes from 914mm to 4590mm



## OUT

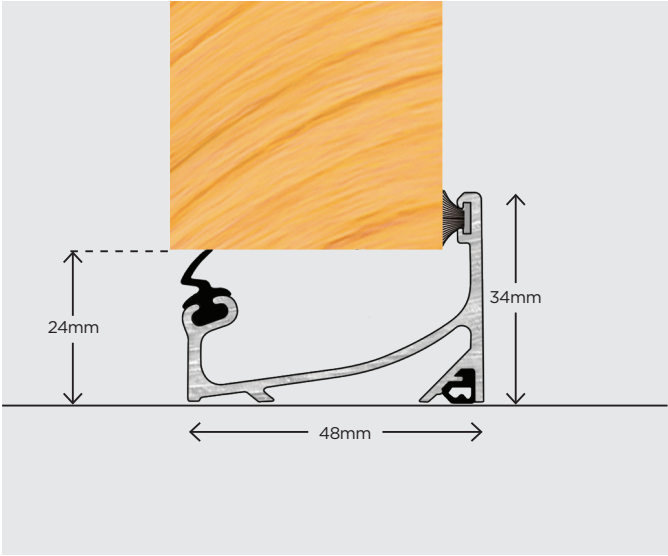
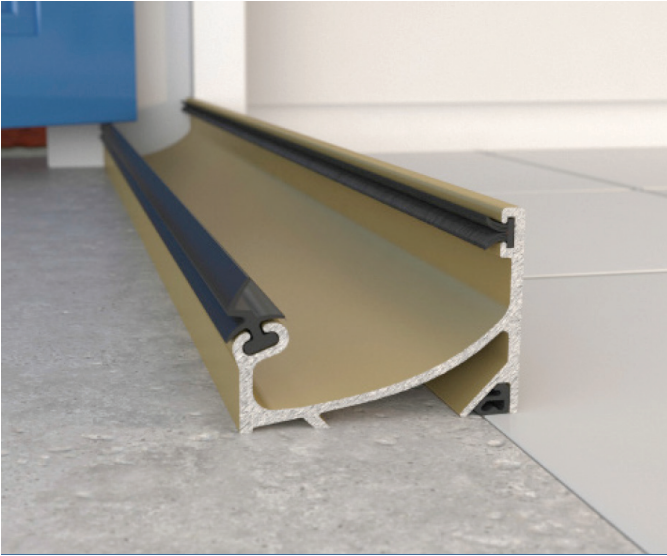
Outward

Ref: 1.01.0325

Accepts standard striker block for flush bolts in double doors

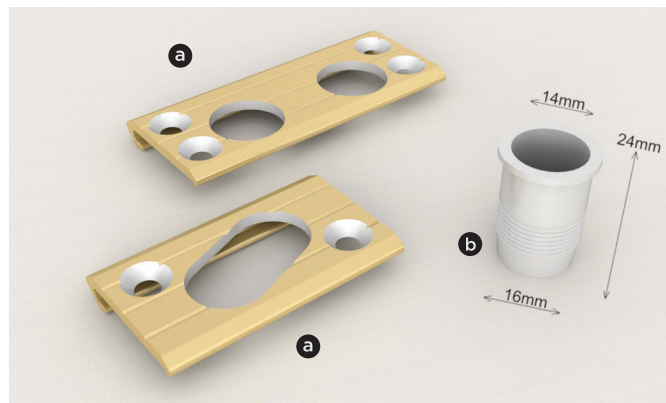
Available in mill, gold, bronze & black

In sizes from 914mm to 4590mm



## MWK Striker Blocks & Accessories

- a. MWK striker block can be supplied blank or pre-machined for adjustment
- b. Optional shoot bolt keep can be used in conjunction with the MWK Striker Block or on its own



### Side Light Infill

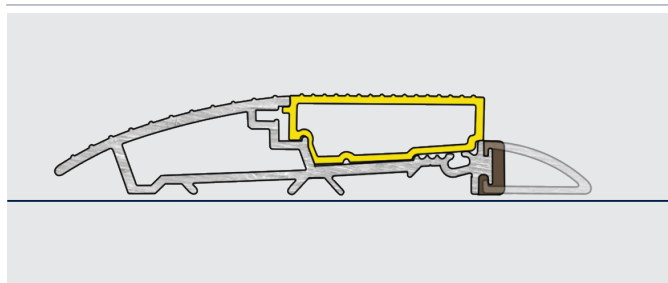
Ref: 1.01.0268

This profile fits into the channel of the MDS range of weatherbars allowing the sidelight to sit on top

Supplied complete with end caps

Available in mill & gold

In sizes from 1000mm to 3000mm



### Bottom Door Infill

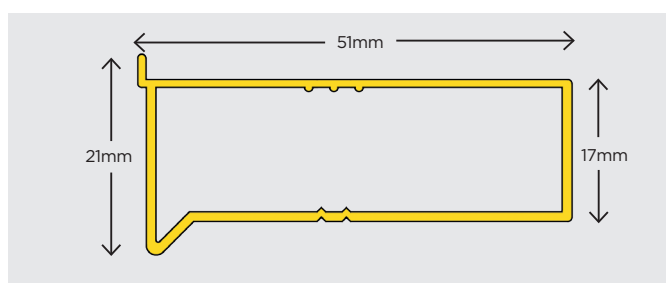
Ref: 1.01.0352

Fits to bottom of PVC door to give a flush finish

Available in mill & gold

In sizes from 1000mm to 3000mm

Supplied with end caps



### Bottom Door Infill

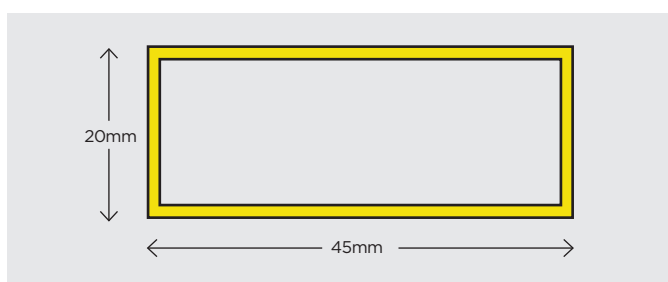
Ref: 1.01.0351

Fits to bottom of PVC door to give a flush finish

Available in mill & gold

In sizes from 1000mm to 3000mm

Supplied with end caps



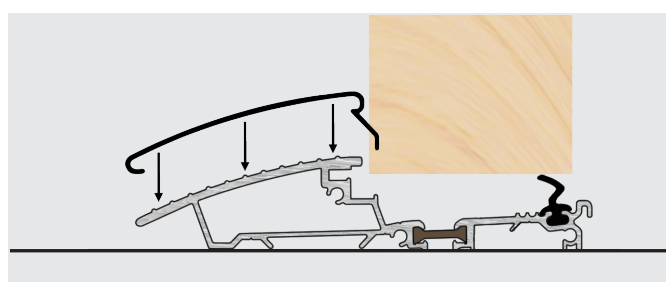
### MDS 25/2 Ramp Protector

Ref: 1.10.0140

Length - 1m & 3m

PVC clip on ramp protector

Available in black



## Aluminium Tiebars

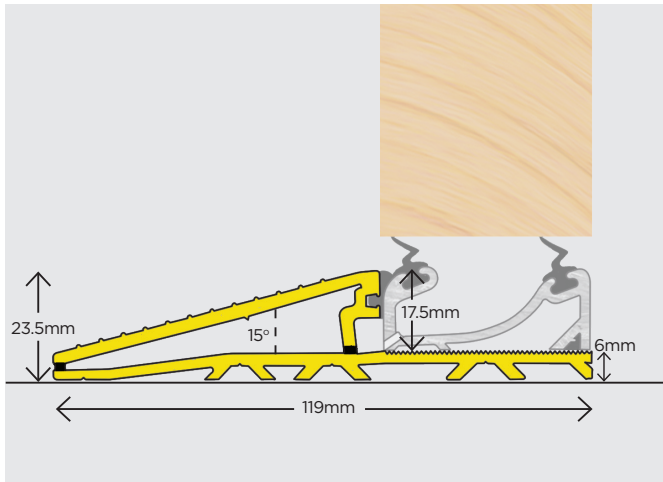
### MTB Tie Bar

Ref: 1.01.0270

Suitable for Adjustex (p28), DSS (p28) & HPB (p32)

Available in mill, gold & black

In sizes from 1000mm to 4590mm

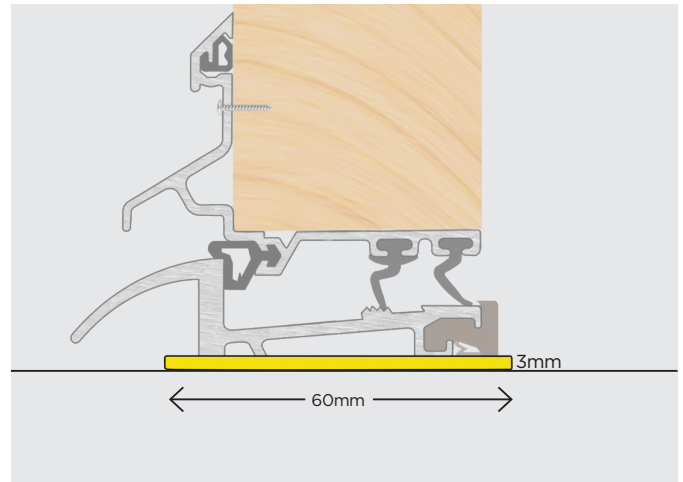


### 3x60 Flat Tie Bar

Ref: 1.01.0259

Available in mill

In sizes from 1000mm to 4590mm



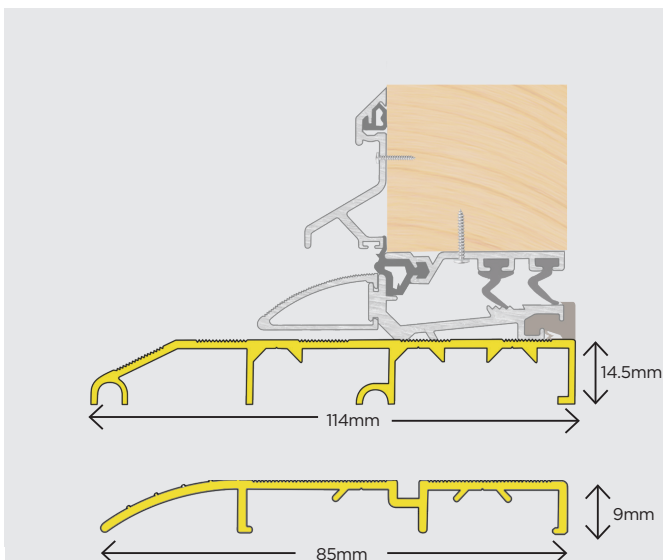
### PTB 114 & 85 Tie Bars

**PTB 114** - Ref: 1.01.0341

**PTB 85** - Ref: 1.01.0340

Available in mill & gold

In sizes from 1000mm to 3000mm

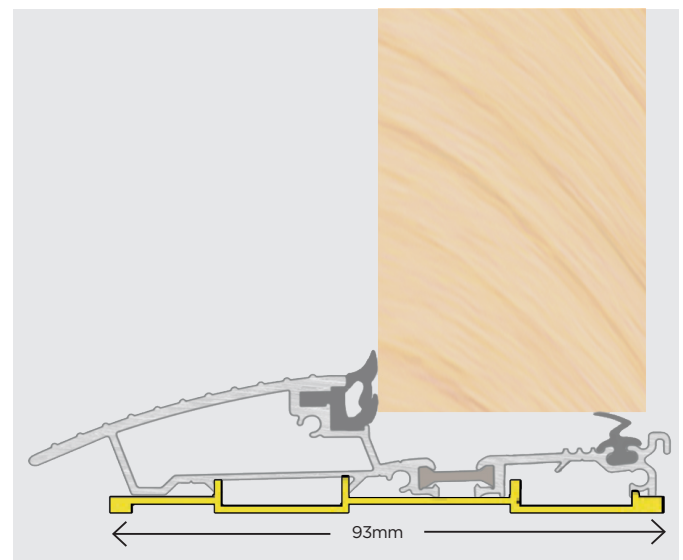


### MDS 25 Tie Bar

Ref: 1.01.0256

Available in mill

In sizes from 1000mm to 3000mm



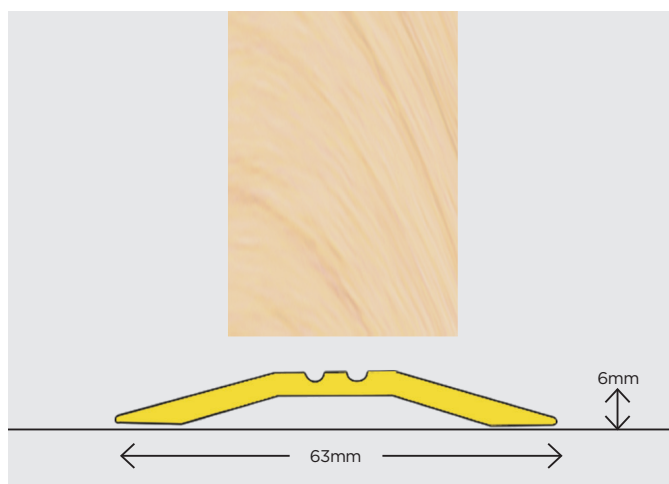


## CDT 63 Tie Bar

Ref: 1.01.0449

Available in mill

In sizes from 1000mm to 3000mm

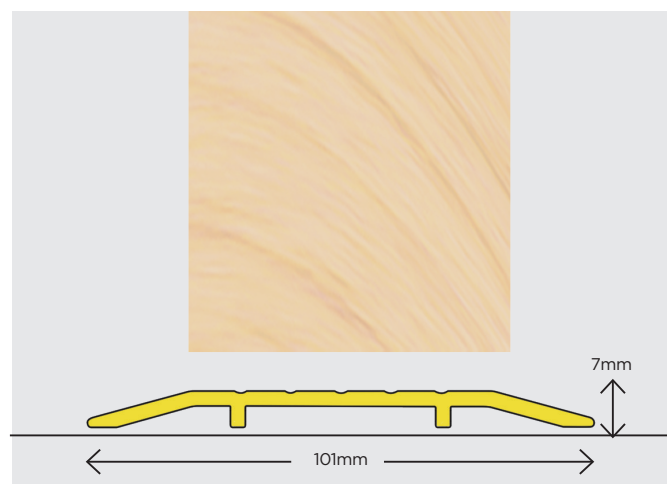


## CDT 101

Ref: 1.01.0447

Available in mill

In sizes from 1000mm to 3000mm

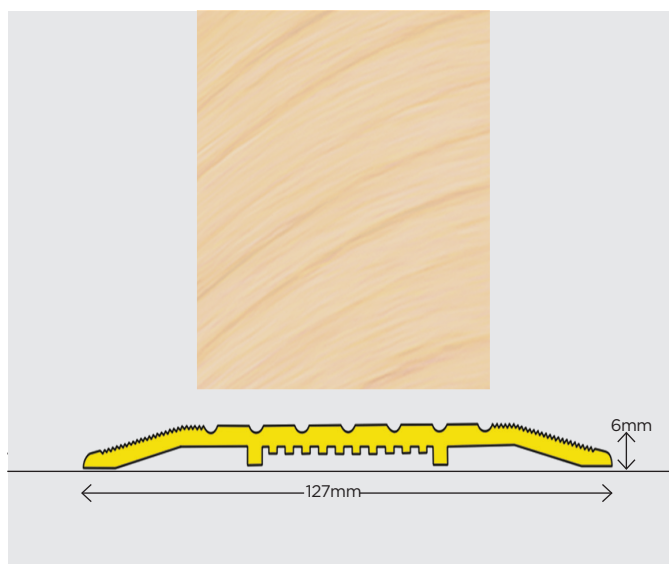


## CDT 127 Tie Bar

Ref: 1.01.0456

Available in mill

In sizes from 1000mm to 3000mm

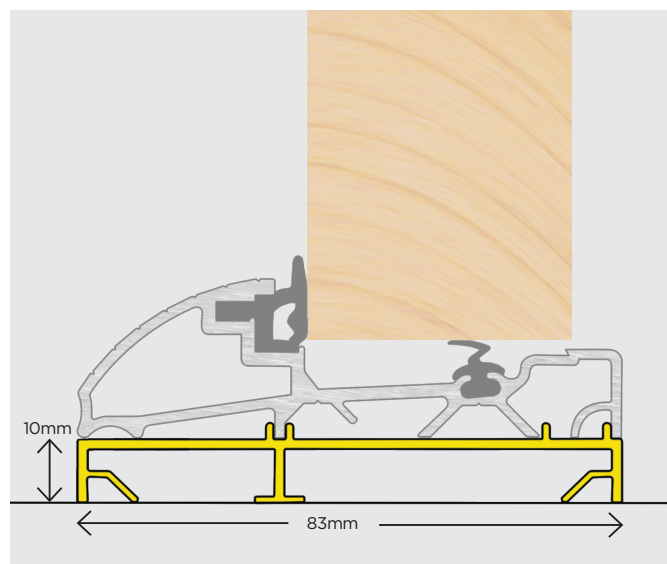


## MDS 80 10mm Packer

Ref: 1.01.0572

Available in mill & gold

In sizes from 1000mm to 3000mm



## Deflectors

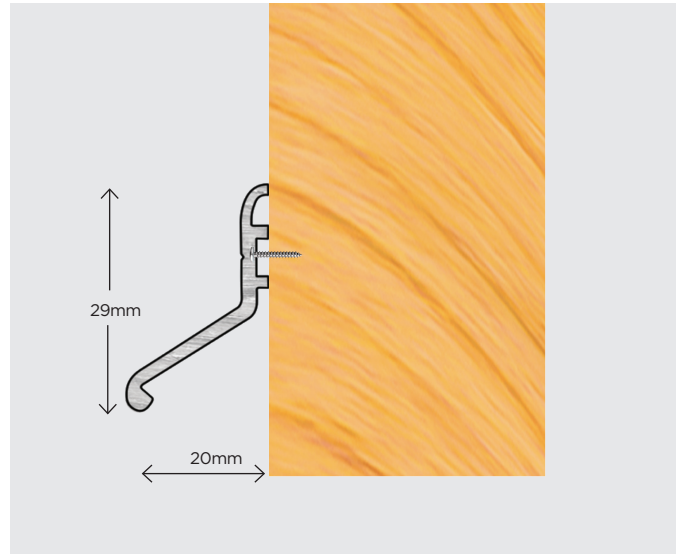
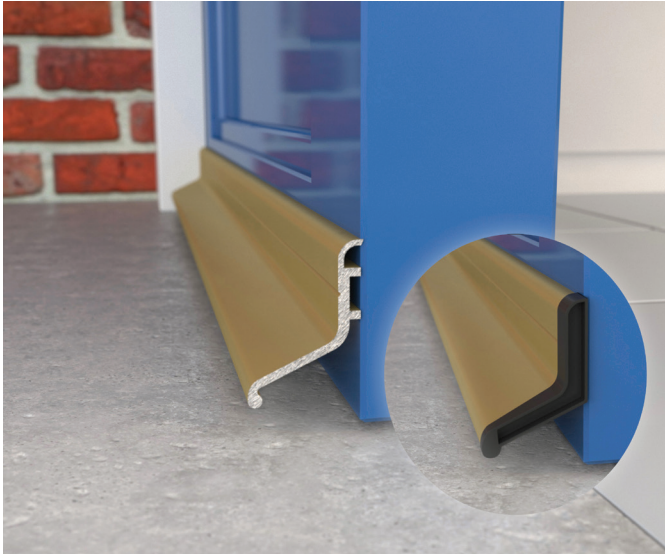
### Deflector 20

Inward & Outward

Ref: 1.01.0110

Available in mill, gold, white, black & bronze

In sizes from 914mm to 4590mm



### Expelex Concealed Fix

Inward & Outward

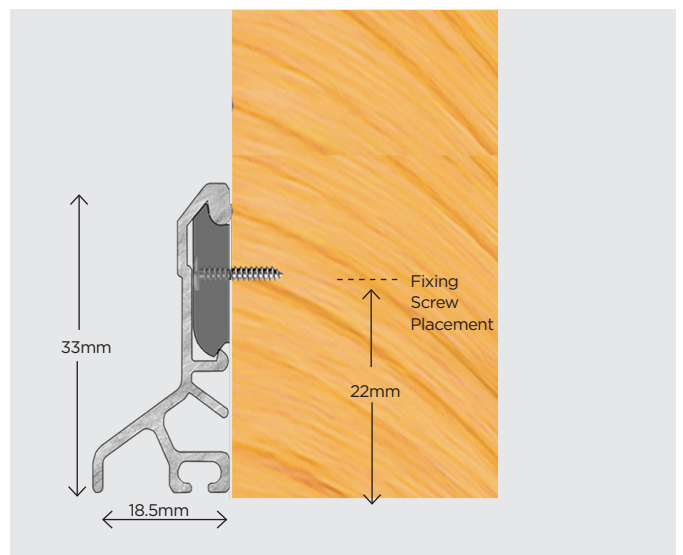
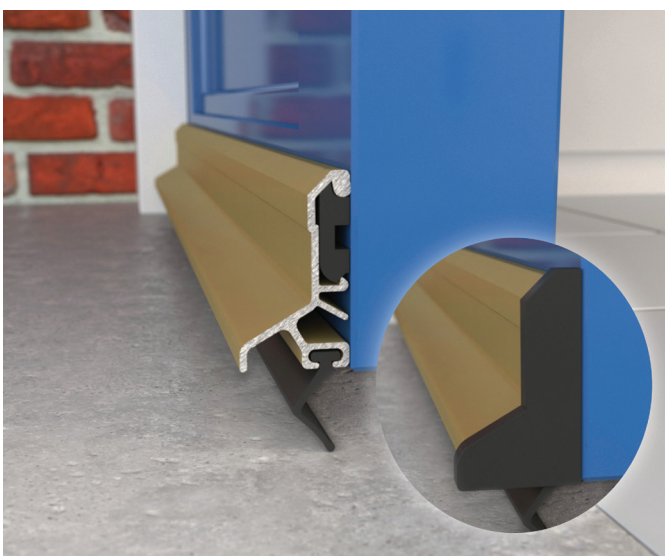
**With Seal** Ref: 1.01.0142

**Without Seal** Ref: 1.01.0143

No visible screws

Available in mill, gold, black, white, blue, green & red

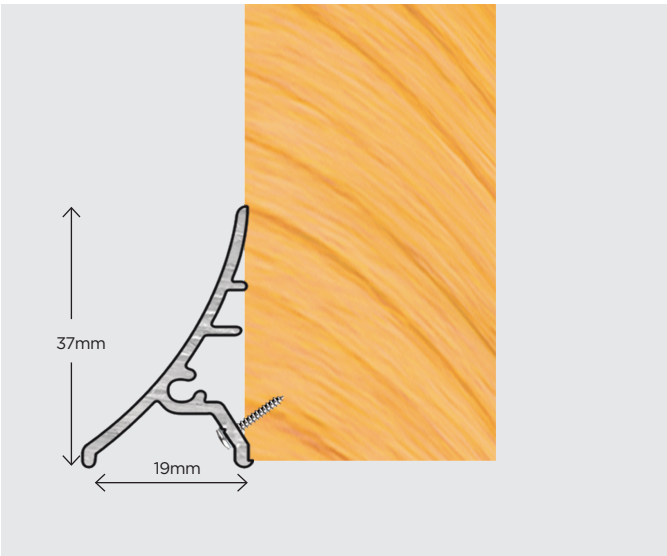
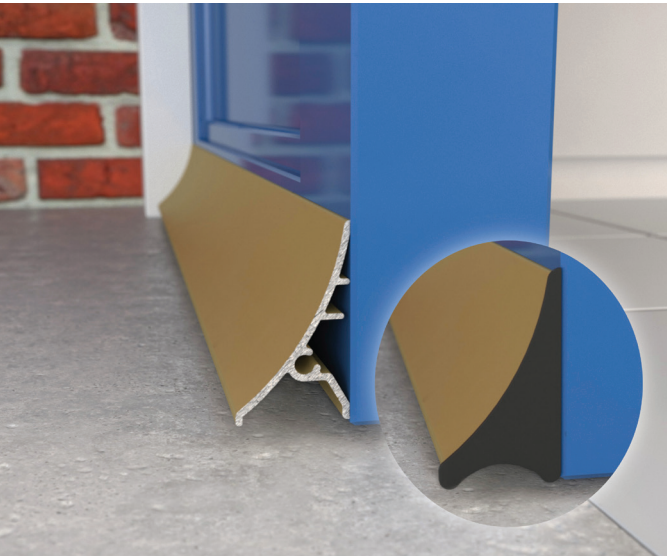
In sizes 914mm



# Radius Concealed Screw Fix

Inward & Outward  
Ref: 1.01.0148

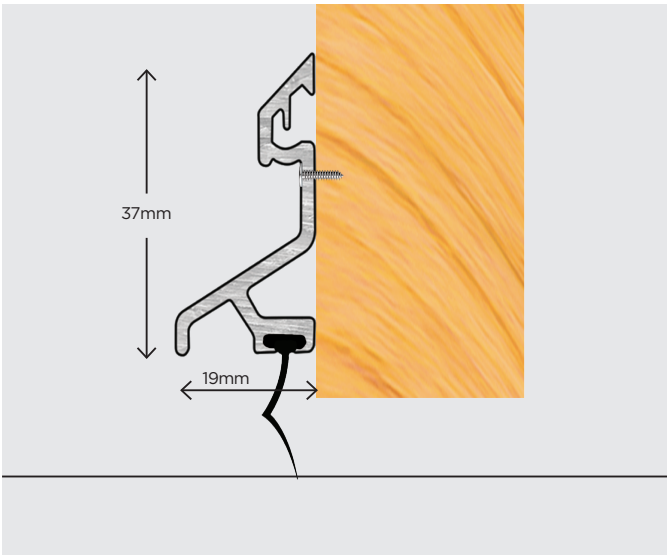
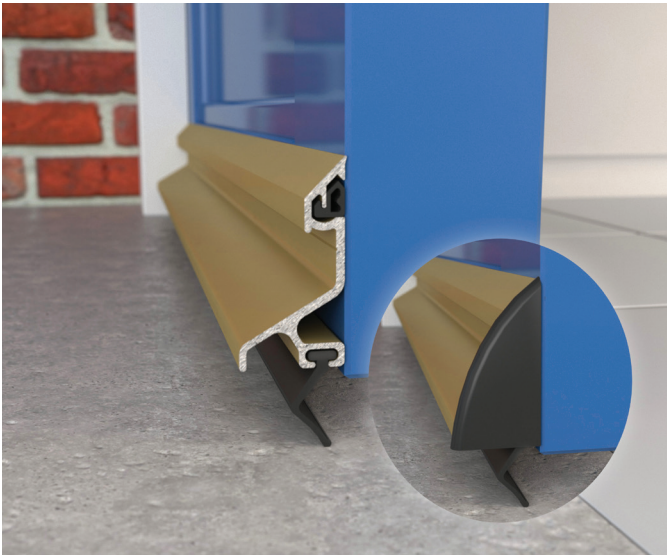
No visible screws  
In mill, gold, black, green, red, blue & white  
In sizes from 914mm to 4590mm



# Expelex

Inward & Outward  
**With Seal** Ref: 1.01.0145  
**Without Seal** Ref: 1.01.0146

Available in mill, gold, bronze, black & white  
In sizes from 914mm to 4590mm

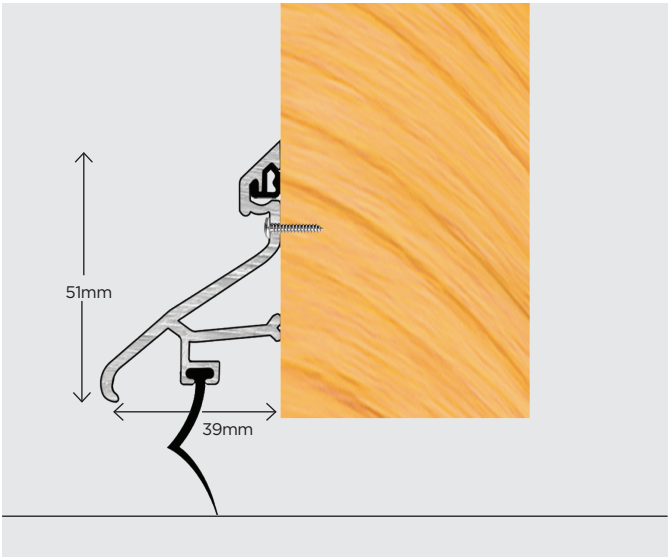
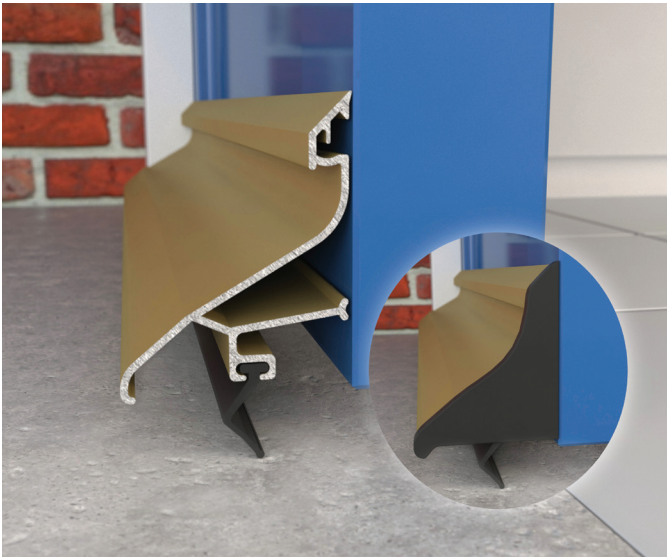




## ERD Rain Deflector

Inward & Outward	
Without Seal	Ref: 1.01.0130
With Seal	Ref: 1.01.0132

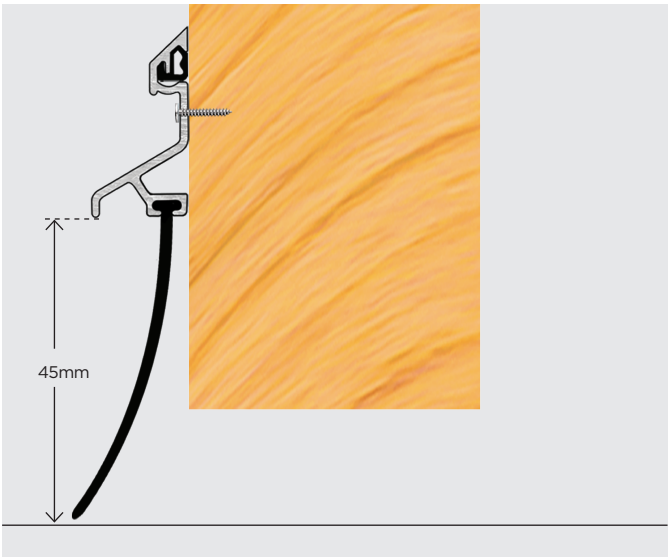
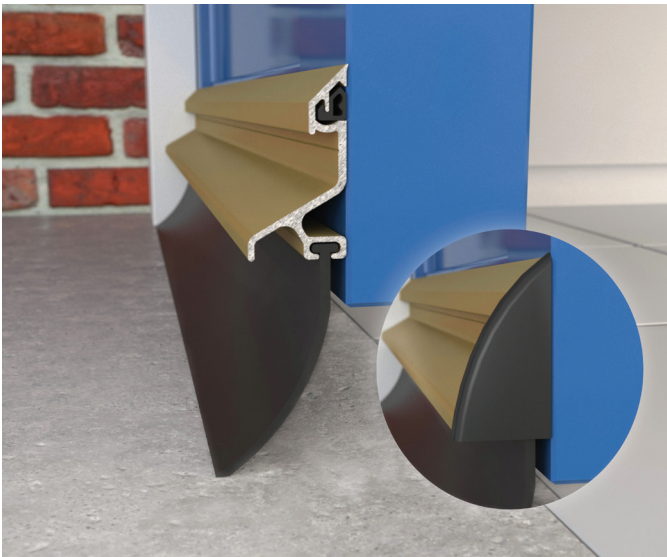
Available in mill & gold
In sizes from 914mm to 4590mm



## Garex

Inward, Outward & Roller Shutter doors
Ref: 1.01.0163

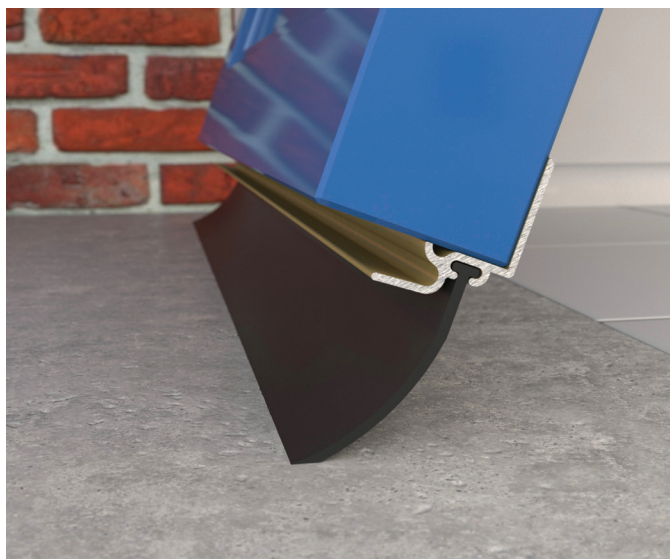
Suitable for steel, timber or composite doors
Available in mill, gold, bronze, black & white
In sizes from 914mm to 4590mm



## Garin

Inward, Outward & Roller Shutter doors

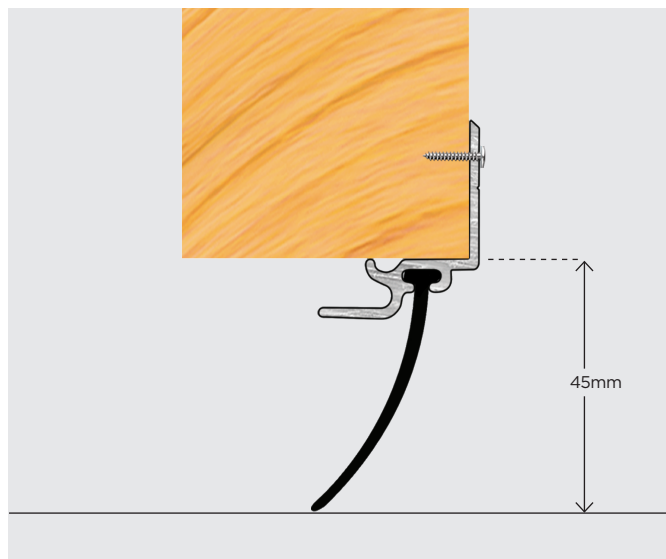
Ref: 1.01.0160



Suitable for steel, timber or composite doors

Available in mill, gold, bronze, black & white

In sizes from 914mm to 4590mm

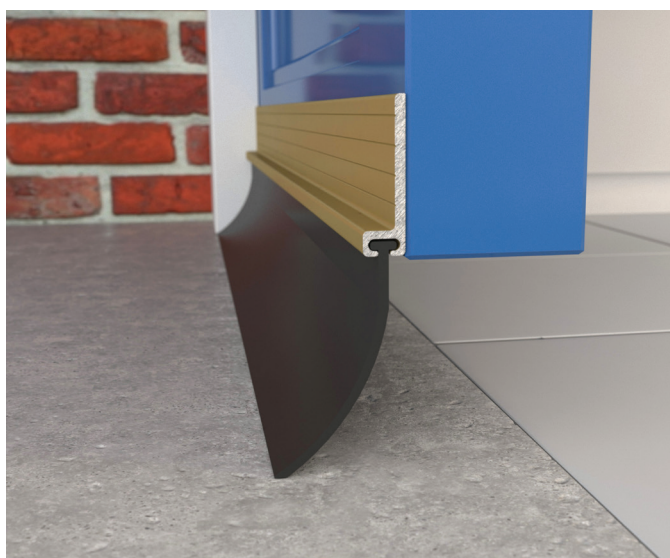


## GIFS & IFS

Inward, Outward & Roller Shutter doors

**GIFS** - Ref: 1.01.0185

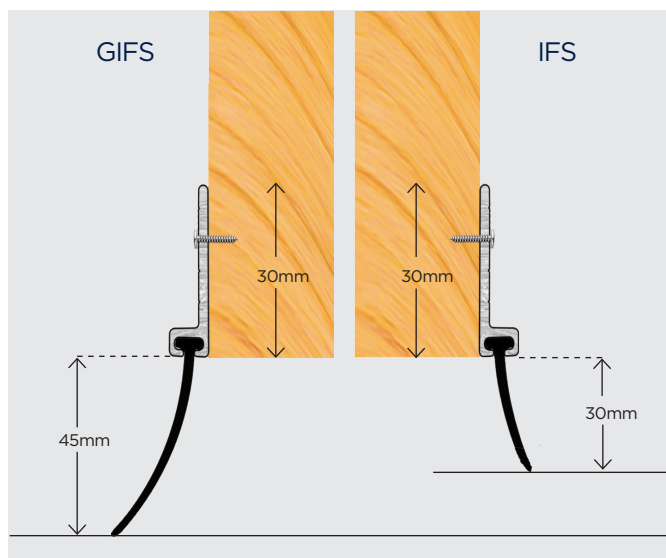
**IFS** - Ref: 1.01.0182



Suitable for steel, timber or composite doors

Available in mill

In sizes from 914mm to 4590mm



## Bi-Fold Threshold

### Bi-Fold Threshold

Outward

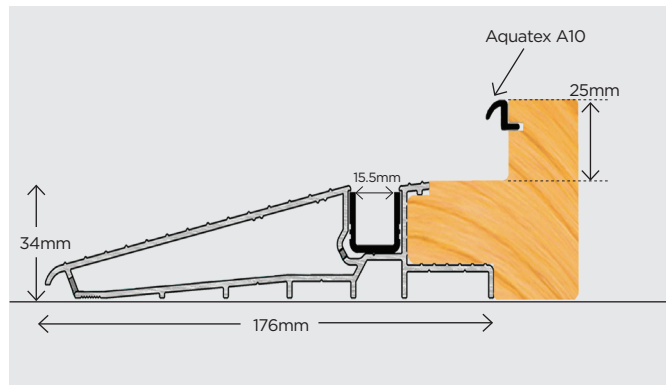
Ref: 1.01.0440

Length: 1m to 6m

Finish: Brown, SAA, Gold & Black



### Machining Detail

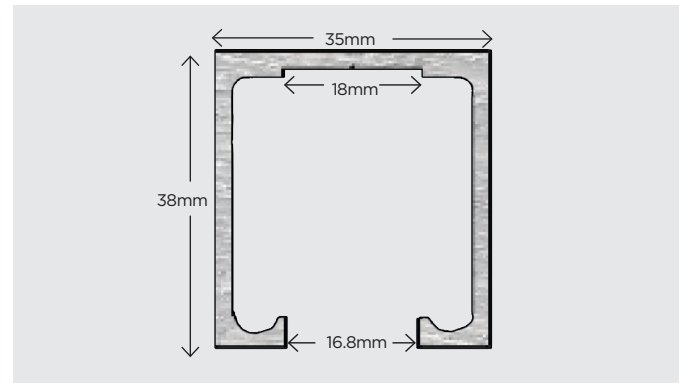


### Bi-Fold Head Track

Ref: 1.01.0441

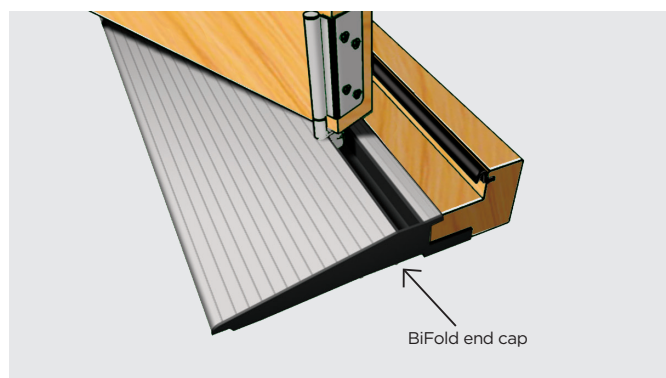
Length: 1m to 6m

Finish: SAA.



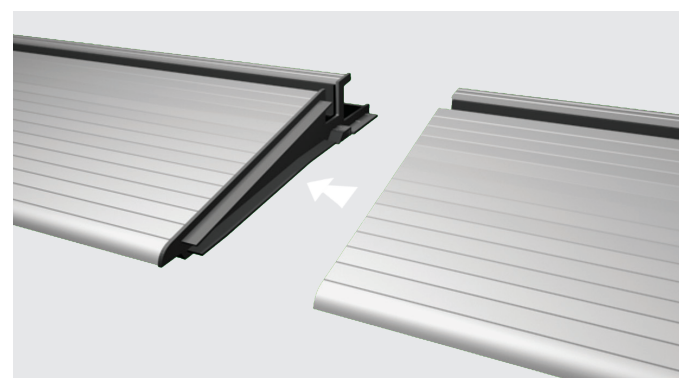
### End Cap

Ref: 1.12.0268



### Bi-Fold Connector

Ref: 1.12.0269





## Stable Door Kit

Ref: 1.01.0965

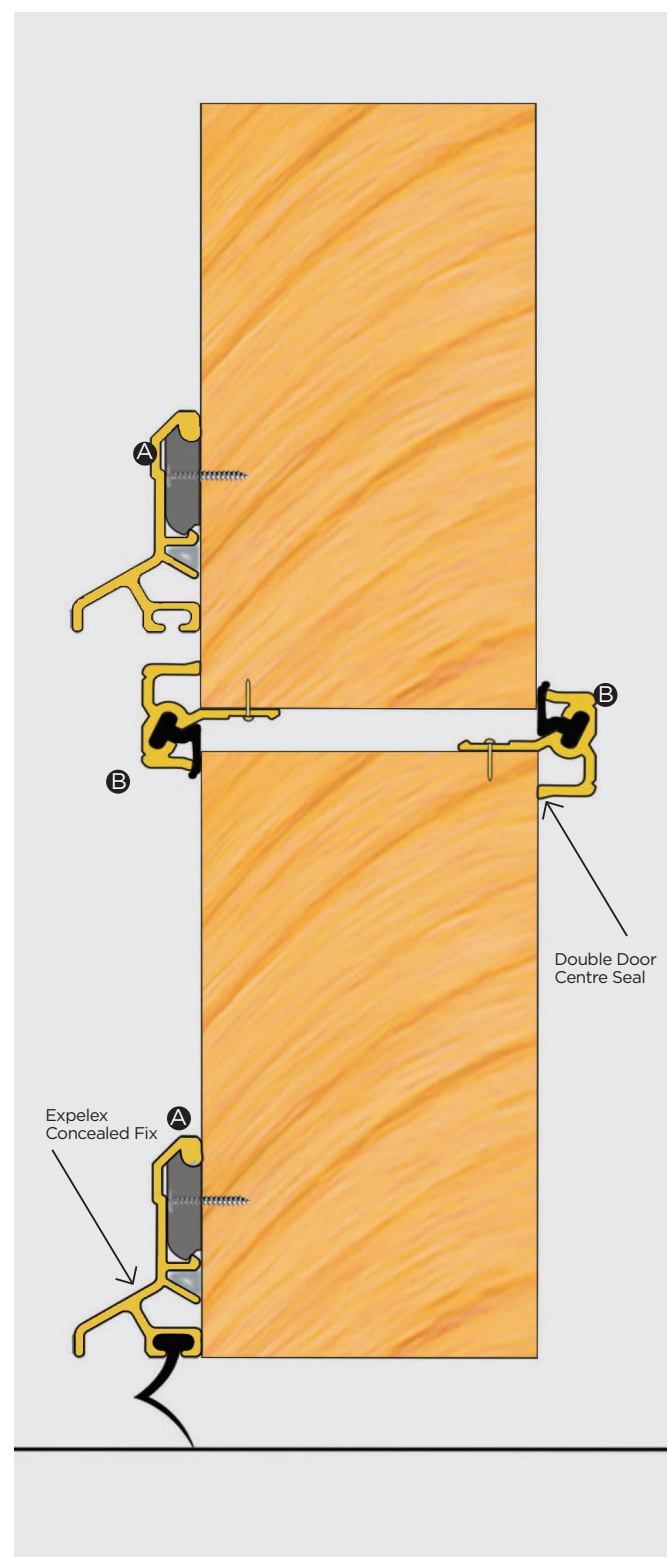


Stable Door Kit consists of:

**A.** Expelex Concealed Fix 914mm x 2 pieces

**B.** Double Door Centre Seal 914mm x 2 pieces

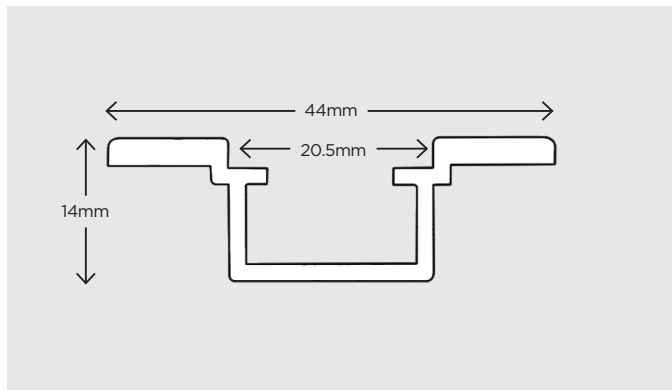
Available in gold, silver, white, black, blue, green & red



# Lock Edges for Composite Doors

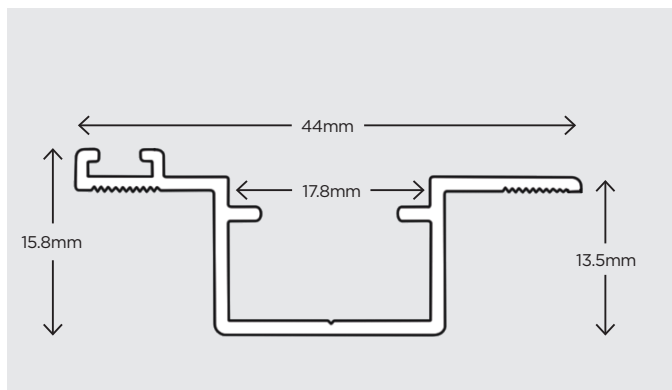
Aluminium  
Ref: LE1/44/20/5443

Colour: White Ral 9010, Brown Ral 8011, Brown Ral 8017, Brown Ral 8003  
For 20mm Lock Face Plate



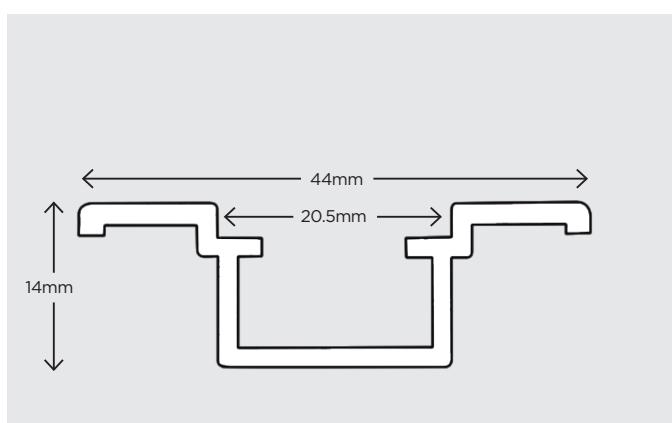
Aluminium  
Ref: LE4/44/16/5651

Colour: White Ral 9910  
For 16mm Lock Face Plate



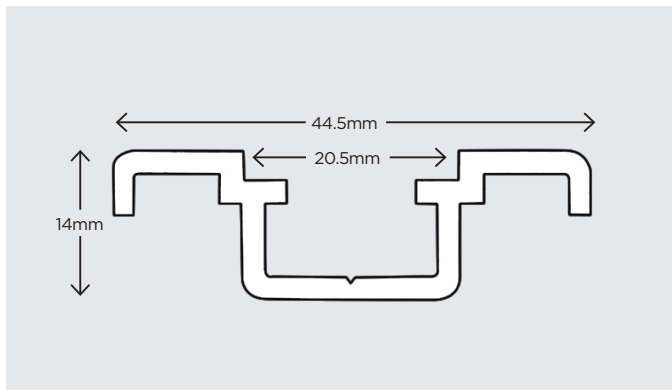
Aluminium  
Ref: LE6/44/20/5798

Colour: White Ral 9010, Brown Ral 8003, Brown Ral 8017  
For 20mm Lock Face Plate



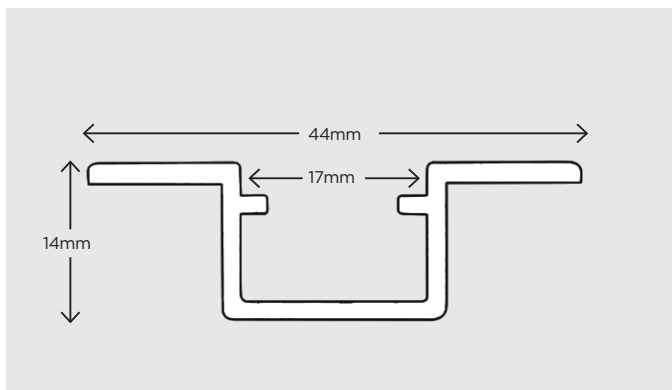
Aluminium  
Ref: LE2/44/20/7216

Colour: White Ral 9016  
For 20mm Lock Face Plate



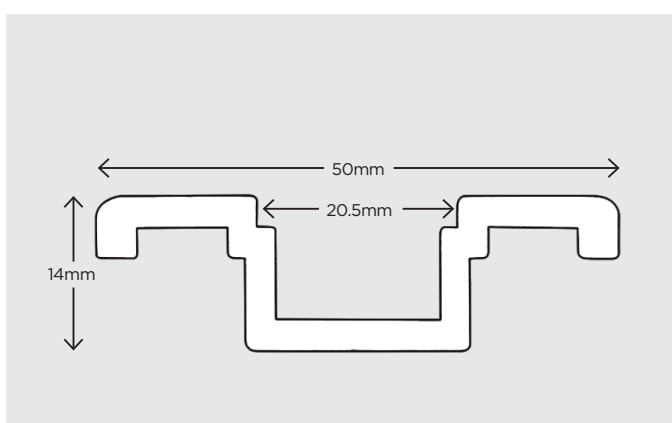
Aluminium  
Ref: LE5/44/16/5799

Colour: White Ral 9010, Brown Ral 8017  
For 16mm Lock Face Plate



Aluminium  
Ref: LE8/50/20/6064

Colour: White Ral 9010  
For 20mm Lock Face Plate



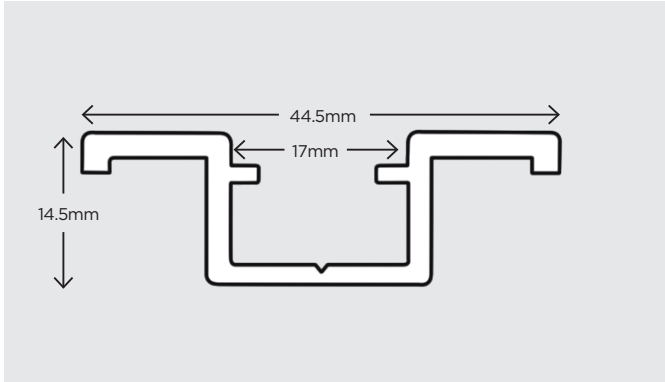
## Lock Edges for Composite Doors

PVC

Ref: LE9/PVC

Colour: White

For 16mm Lock Face Plate

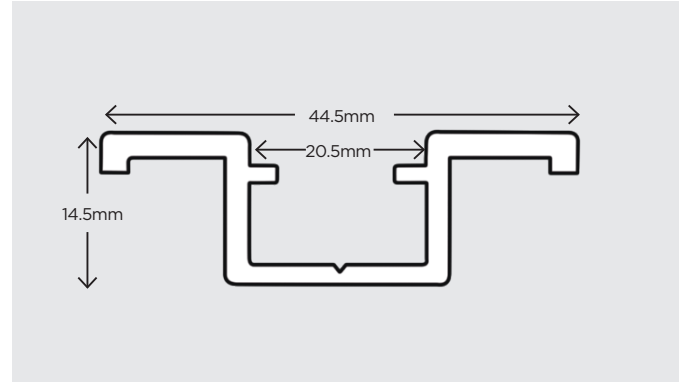


PVC

Ref: LE10/PVC

Colour: White

For 20mm Lock Face Plate

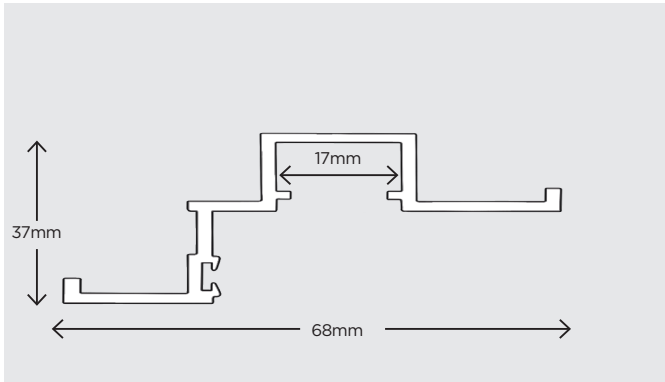


Aluminium

Ref: LE17

Colour: White Ral 9010

For 16mm Lock Face Plate on Rebated Doors

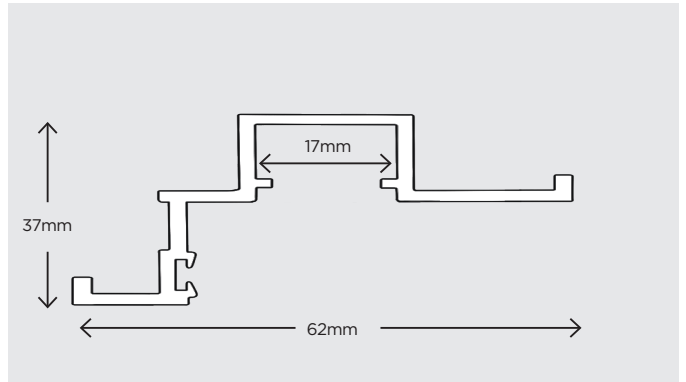


Aluminium

Ref: LE18

Colour: White Ral 9010

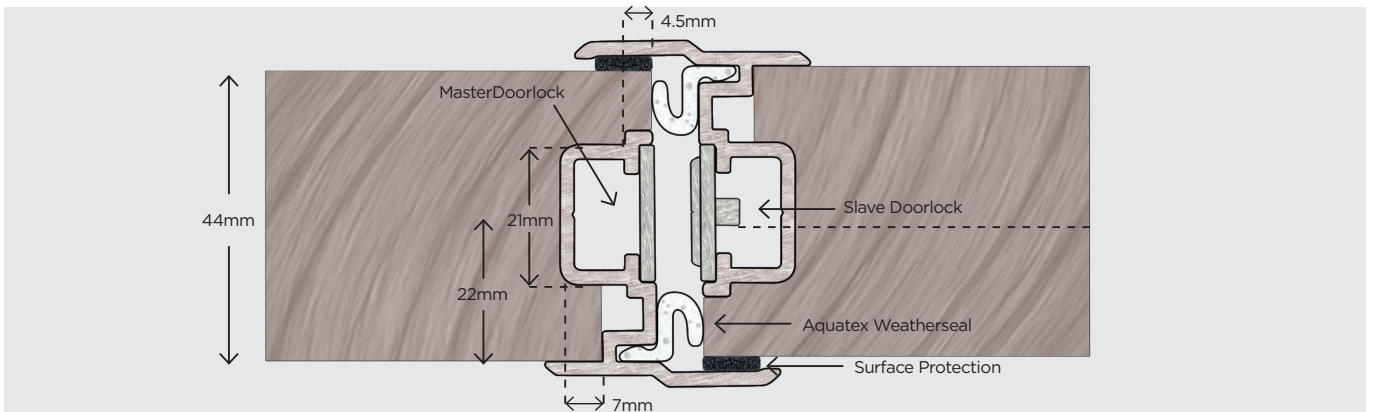
For 16mm Lock Face Plate on Rebated Doors



## Double Door Rebate Lock Set

Aluminium

Suitable for 44mm Door Slabs





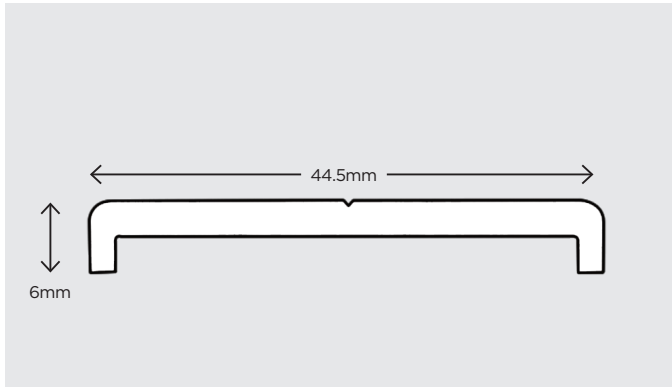
# Hinge Edges for Composite Doors

Aluminium

Ref: HE1/44/5694

Colour: White Ral 9016, Brown 8017

Suitable for 44mm door

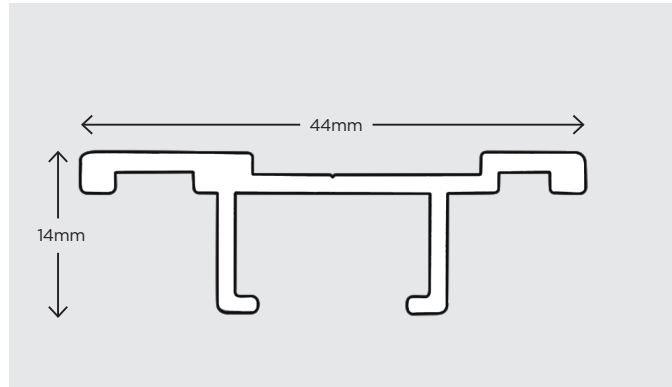


Aluminium

Ref: HE3/44/6023

Colour: White Ral 9010, Brown 8017, Brown 8011

Suitable for 44mm door

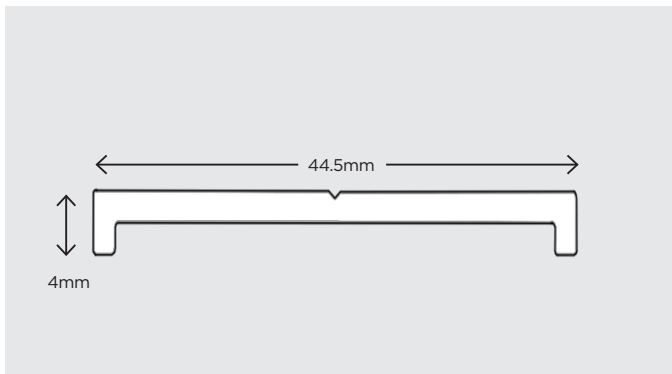


Aluminium

Ref: HE6/44/6279

Colour: White Ral 9010, Brown 8017, Brown 8016, Brown 8003, Brown 8001

Suitable for 44mm door

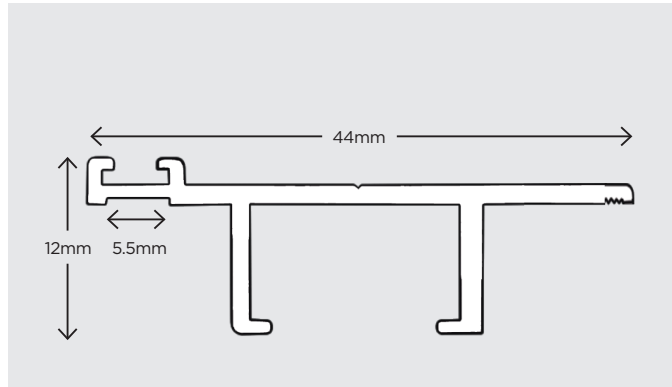


Aluminium

Ref: HE2/44/5652

Colour: White Ral 9910, Brown 8011

Suitable for 44mm door

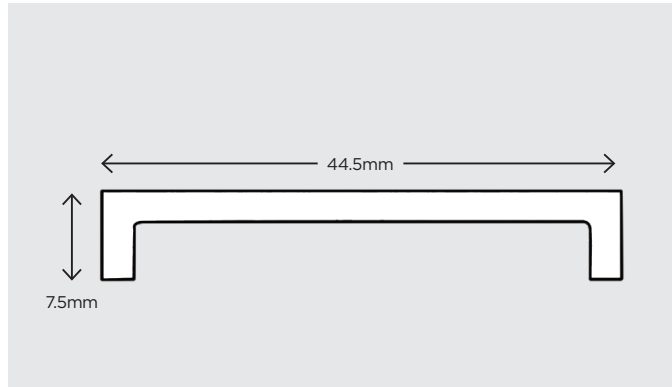


Aluminium

Ref: HE4/44/5925

Colour: White Ral 9010, Brown 8017, Brown 8011

Suitable for 44mm door

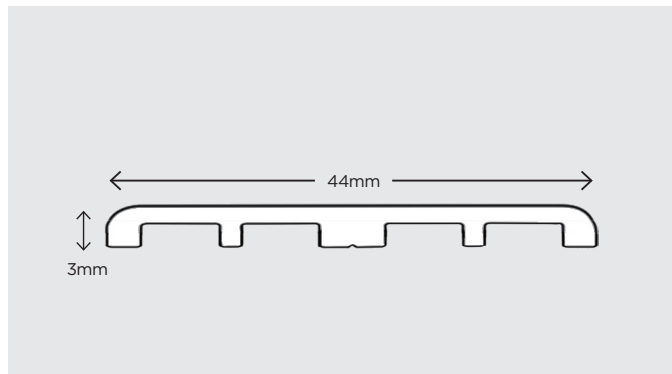


Aluminium

Ref: HE8/44/6484

Colour: White Ral 9010, Brown Ral 8017

Suitable for 44mm door



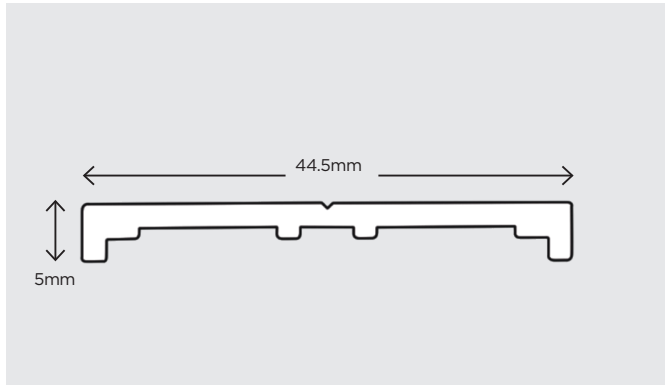
## Hinge Edges for Composite Doors

Aluminium

Ref: HE11/44/7250

Colour: White Ral 9016

Suitable for 44mm door

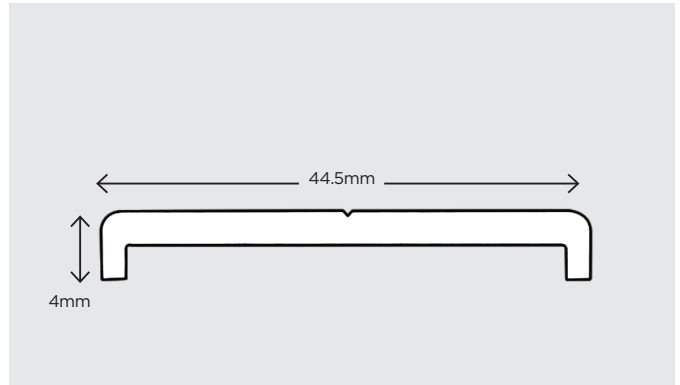


PVC

Ref: HE12/PVC

Colour: White, Brown

Suitable for 44mm door

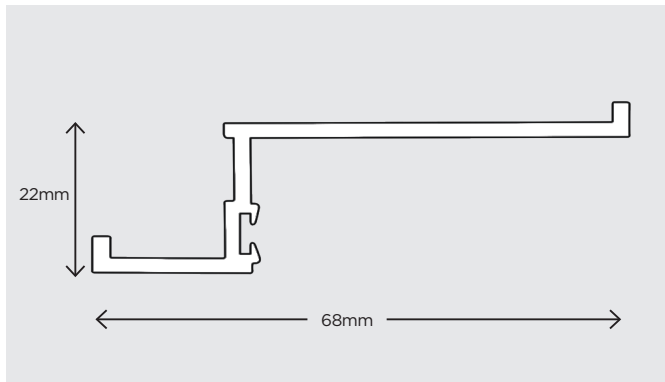


Aluminium

Ref: HE13

Colour: White Ral 9016

Suitable for Rebated Doors

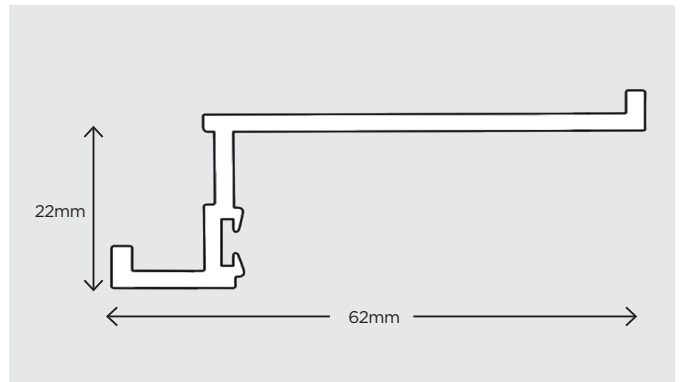


Aluminium

Ref: HE14

Colour: White Ral 9010

Suitable for Rebated Doors



## Elast-O-Sealant

Ref: 1.18.0400

Available in black, brown, white, grey & clear

All weather sealant

Can be applied to wet surfaces

Sticks to most construction material

Can be overpainted

Long life flexibility

Mould & mildew resistant



## Door Surrounds

### Standard Door Seal

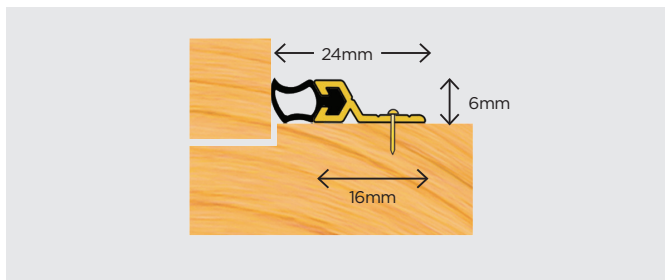


Screw Fix Ref: 1.01.0400

Aluminium carrier with TPE gasket

Available in mill, gold, bronze, black & white

In sizes 914mm, 2134mm, 2440mm, 5180mm & 6090mm



### Flex 'n' Seal

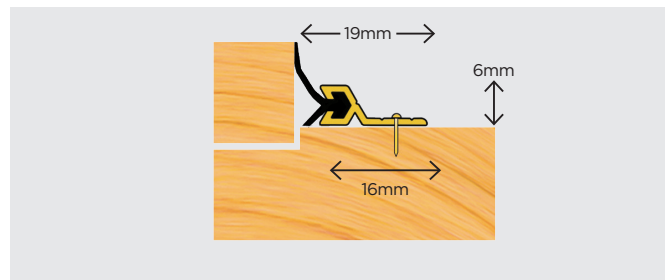


Pin Fix Ref: 1.01.0151

Aluminium carrier with EPDM rubber gasket

Available in mill, gold, bronze, black & white

In sizes 914mm, 2134mm, 2440mm, 5180mm & 6090mm



### QDS

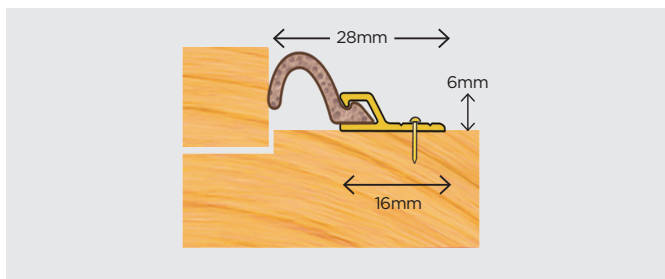


Pin Fix Ref: 1.01.0415

Aluminium carrier with Aquatex™ gasket

Available in mill & gold

In sizes 914mm, 2134mm & 5180mm



### Windor

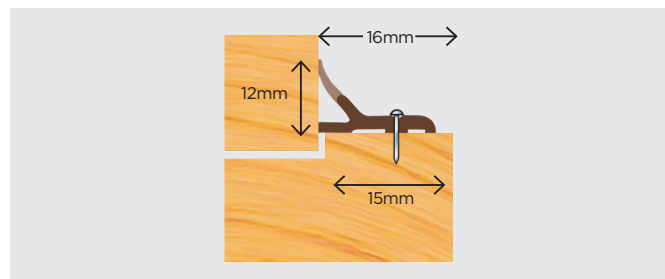


Pin Fix Ref: 1.01.0455

Dualhard PVC door surround

Available in white & brown

In sizes 914mm, 2134mm & 5180mm



### PVC Pile Weather Set

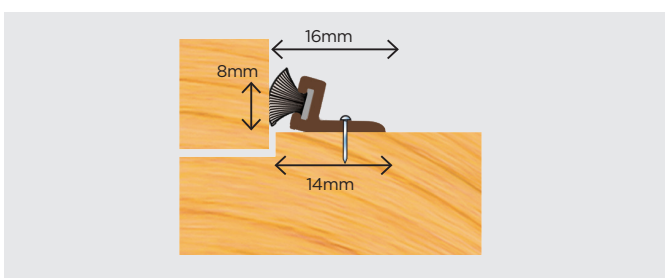


Pin Fix Ref: 1.01.0345

PVC carrier with polypropylene pile

Available in white & brown

In sizes 914mm, 2134mm & 5180mm



### Aluminium Pile Weather Set

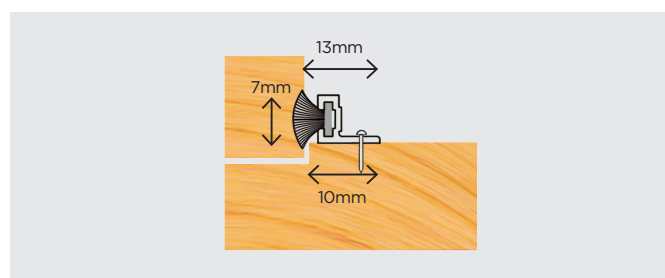


Pin Fix Ref: 1.01.0347

Aluminium carrier with polypropylene pile

Available in mill

In sizes 914mm, 2134mm & 5180mm





## QBS External

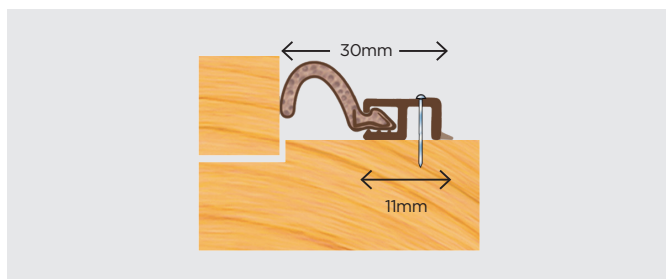


Ref: 1.22.0001

PVC carrier with foam gasket

Available in brown & white

In sizes 2030mm & 5180mm



## QBS Internal

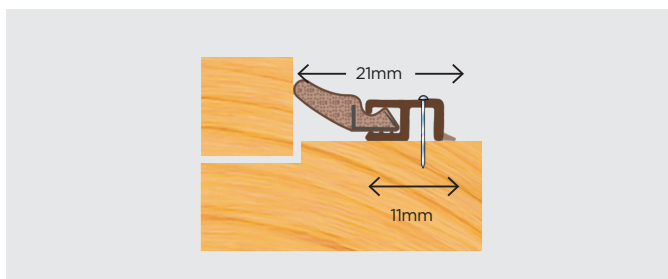


Ref: 1.22.0003

PVC carrier with foam gasket

Available in brown & white

In sizes 2030mm & 5180mm



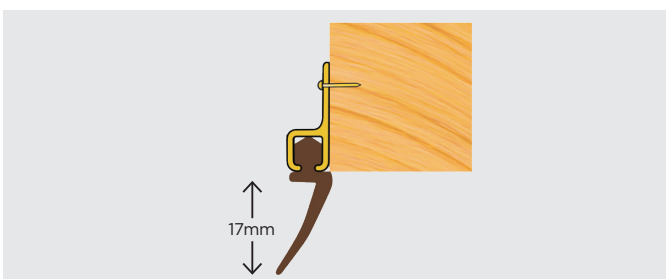
## Bladex

Screw Fix Ref: 1.01.0019

Aluminium carrier with TPE flipper

Available in mill, gold & bronze

In size 914mm



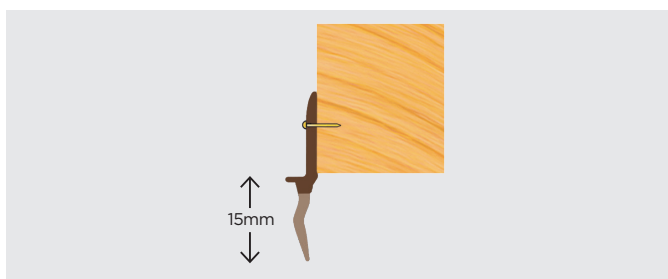
## Bladeseal

Pin Fix Ref: 1.01.0074

Dualhard PVC door bottom

Available in brown & white

In size 914mm



## Double Door Centre Seal



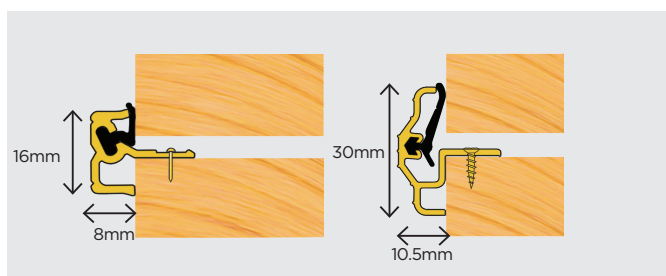
Ref: 1.01.0105 / 16mm

Ref: 1.01.0106 / 30mm

Aluminium carrier with EPDM rubber seal

Available in mill, gold, brown, white & black

In size 2400mm



## Underdoor Foam Draught Excluder

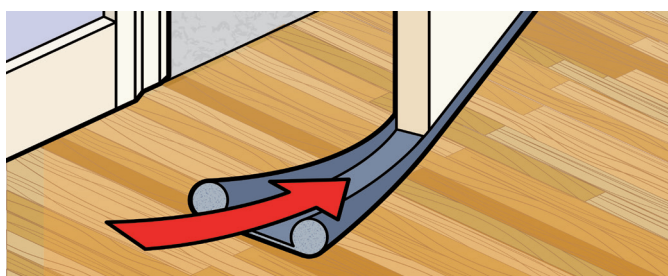
Ref: 1.01.0941

Fits all Internal Doors

Easily installed

Available in grey

In size 914 mm



## DIY Products

### E Strip

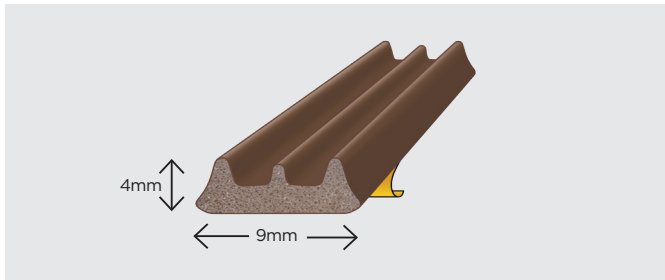
Ref: 1.03.0001

Self adhesive EPDM rubber

Seals gaps 2 - 3.5mm

Available in white & brown

Packed in 5m display pack or 100m reel



### P Strip

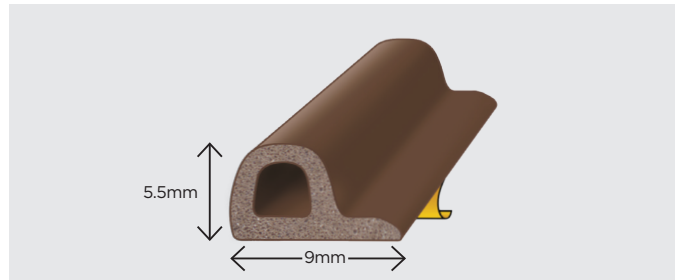
Ref: 1.03.0002

Self adhesive EPDM rubber

Seals gaps 2 - 5mm

Available in white, brown & black

Packed in 5m display pack or 100m reel



### Self Adhesive Foam

Standard 4mm thick x 6mm wide - Ref: 1.01.0380

Extra Wide 4mm thick x 10mm wide - Ref: 1.01.0382

Extra Thick 6mm thick x 8mm wide - Ref: 1.01.0384

Packed in 5m & 15m display packs

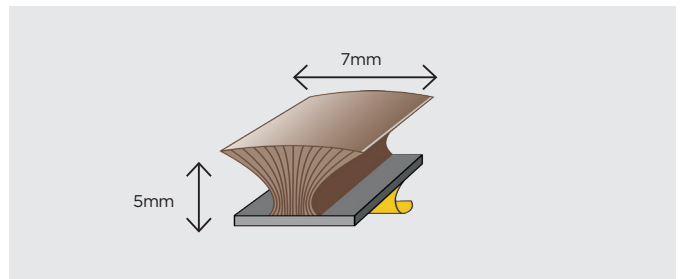


### Self Adhesive Polypropylene Pile

Ref: 1.01.0425

Available in white, brown & grey

Packed in 5m display pack or 100m reel



### Insulated Outside Tap Cover

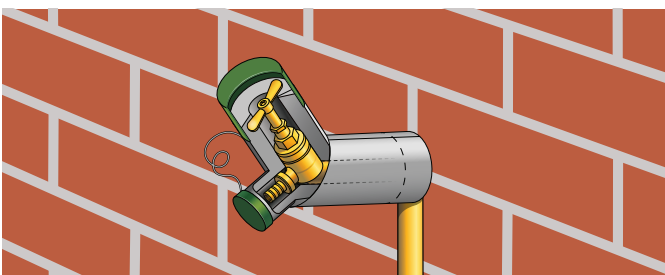
Ref: 1.01.0980

Frost Protection for taps

Fits most taps

Easy to install

Taps can be used with cover left on



### Radiator Heat Reflector Foil

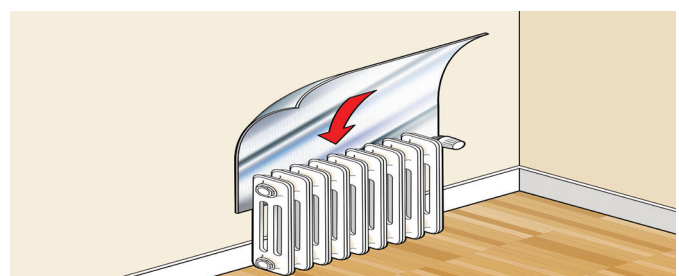
Ref: 1.01.0397

Fits all radiators

Size: 5m x 500mm approx

Reflects warmth, increases heating effect

Easily fitted



## PVC Letterplate Seal with & without Flap

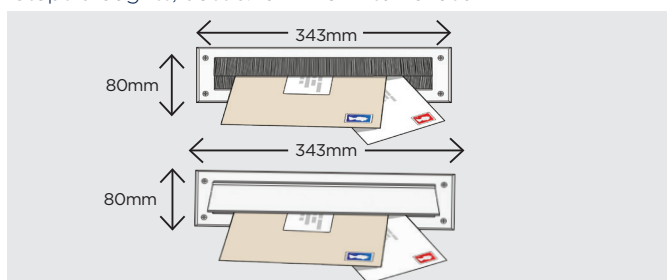
**LPS (no flap)** Ref: 1.01.0212

**LPS (with flap)** Ref: 1.01.0210

Available in white & brown

High impact PVC with long lasting bristle.

Stops draughts, dust & rain. For internal use



## Aluminium Letterplate Seal with Flap

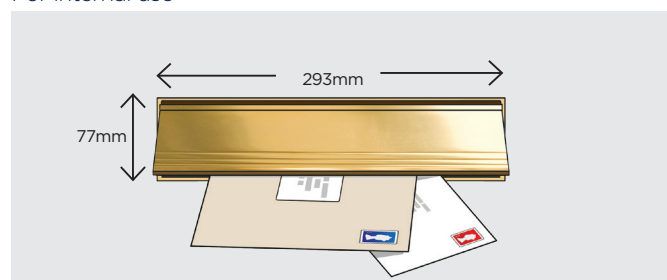
Ref: 1.01.0210

Available in gold, SAA & black

Aluminium flap with long lasting bristle

Stops draughts, dust & rain

For internal use



## Brushstrip

Aluminium Ref: 1.01.0062-65

PVC Ref: 1.01.0032-035

Bristle heights 18mm, 30mm, 40mm, 50mm

Available in mill & gold (aluminium), white & brown (PVC)

In sizes from 914mm to 2134mm



## Industrial Brushstrip

Bristle height 80mm Ref: 1.01.0075

Bristle height 120mm Ref: 1.01.0076

Available in mill, white & black

In sizes from 914mm to 3000mm



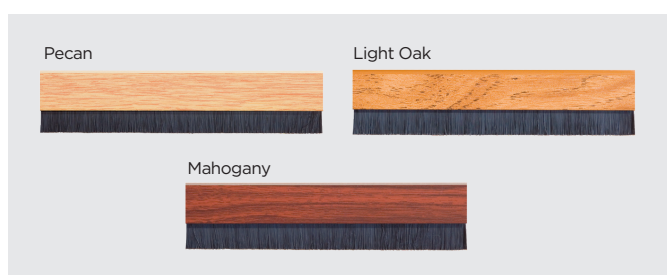
## Brushstrip Concealed Fixings

Ref: 1.01.0042

Available in pecan, light oak, mahogany, white & brown

In size 914mm

Bristle height 22mm



## Glazing Film

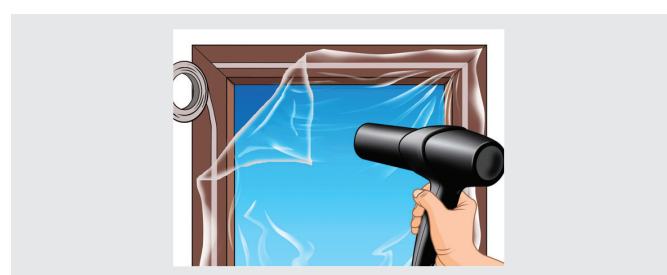
1.8m<sup>2</sup> 1.5m x 1.2m - Ref: 1.01.0391

4.5m<sup>2</sup> 1.5m x 3m - Ref: 1.01.0390

9m<sup>2</sup> 1.5m x 6m - Ref: 1.01.0392

Creates a secondary glazing effect on windows

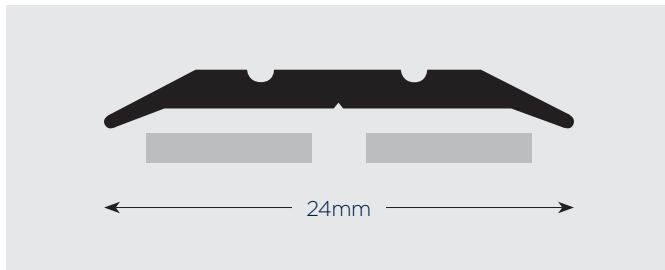
Prevents draughts. Reduces heating costs





## Floor Trims

### Narrow Vinyl Cover Trim



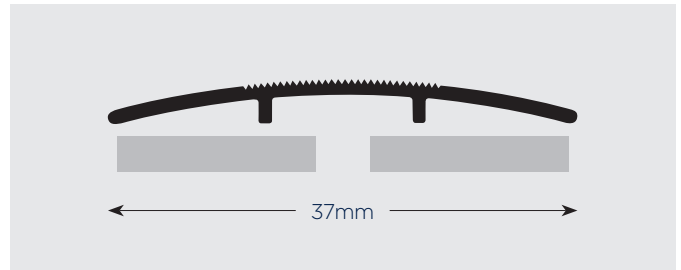
Conceals & protects joints between vinyl/hard floor coverings. Suits all grades/thicknesses.

Product Code - 1.33.0010

Length - 914mm & 2750mm

Colours - SAA & Gold Anodised

### Vinyl/Carpet Cover Trim



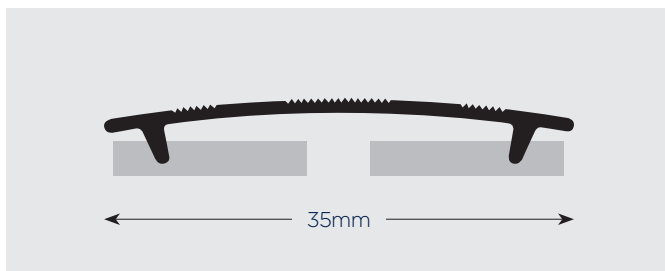
Conceals & protects joints between vinyl/hard floor & carpet coverings.

Product Code - 1.33.0020

Length - 914mm & 2750mm

Colours - SAA & Gold Anodised

### Carpet Cover Trim



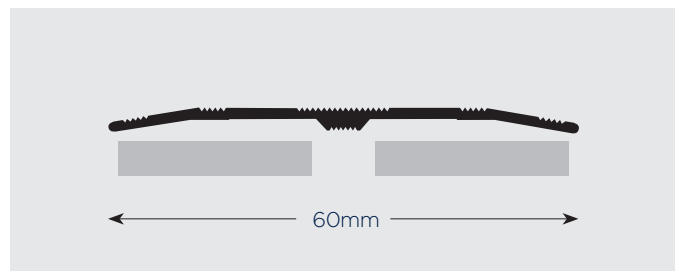
Designed to cover the join between two soft/carpet floor coverings.

Product Code - 1.33.0030

Length - 914mm & 2750mm

Colours - SAA & Gold Anodised

### Commercial Cover Trim



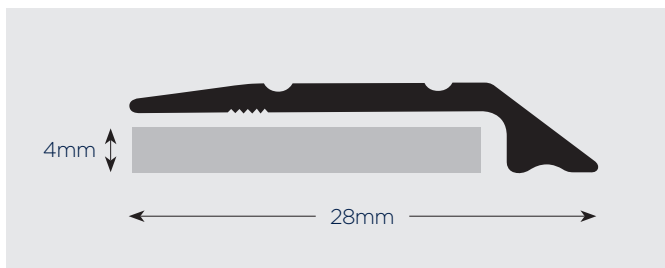
Extra wide for covering large or damaged joints between any two floor coverings.

Product Code - 1.33.0040

Length - 914mm & 2750mm

Colours - SAA & Gold Anodised

### Vinyl Edge Trim (Small)



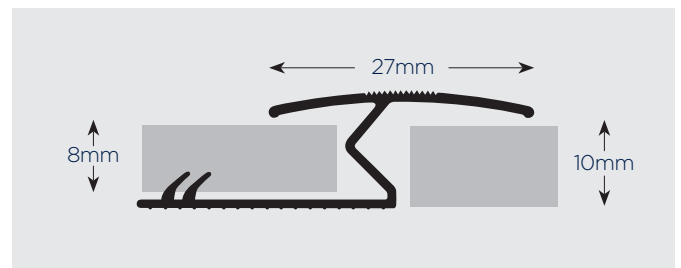
Provides the perfect finish for vinyl/tiles/carpet up to 4mm thick.

Product Code - 1.33.0050

Length - 914mm & 2750mm

Colours - SAA & Gold Anodised

### Laminate Z Trim



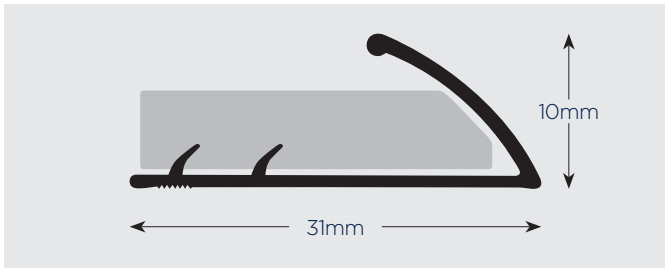
Provides the perfect finish between carpet and laminate/wood flooring.

Product Code - 1.33.0060

Length - 914mm & 2750mm

Colours - SAA & Gold Anodised

### Single Nap Carpet Trim



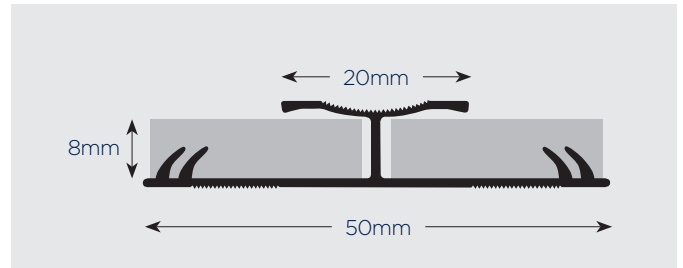
Provides the perfect finish for edging to carpets which require an underlay.

Product Code - 1.33.0070

Length - 914mm & 2750mm

Colours - SAA & Gold Anodised

### Dual Edge Carpet Trim



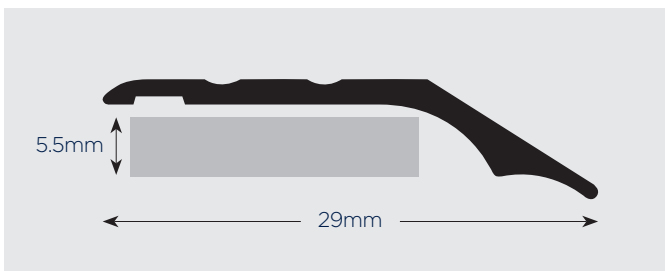
Provides the perfect finish & secures two carpets neatly (not suitable on foam backed).

Product Code - 1.33.0080

Length - 914mm & 2750mm

Colours - SAA & Gold Anodised

### Vinyl Edge Trim (Large)



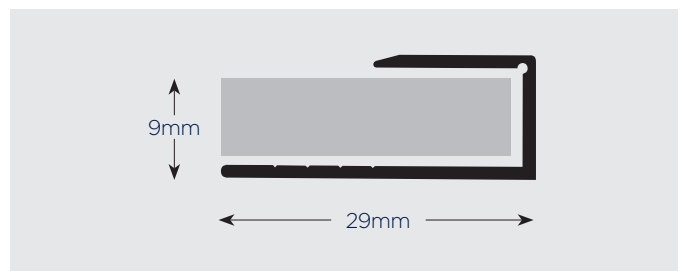
Provides the perfect finish for vinyl/tiles/carpet up to 5.5mm thick.

Product Code - 1.33.0090

Length - 914mm & 2750mm

Colours - SAA & Gold Anodised

### Laminate Square Edge Trim



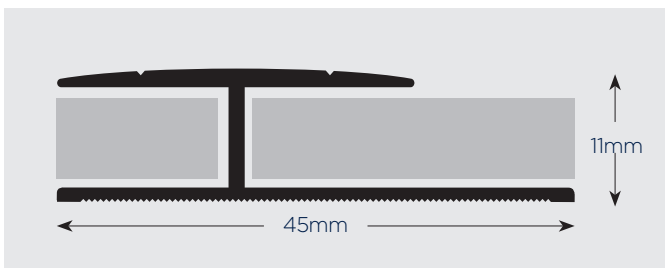
Provides the perfect finish to edging of laminate and wood flooring.

Product Code - 1.33.0100

Length - 914mm & 2750mm

Colours - SAA & Gold Anodised

### Double Edge Floor Trim



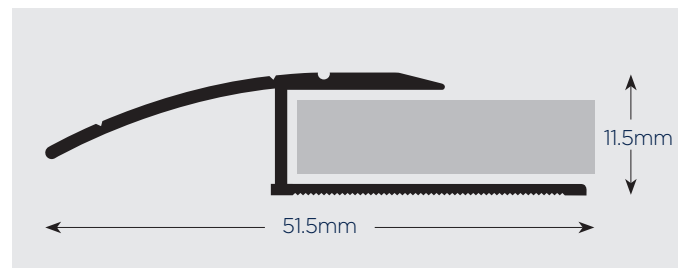
Designed for joining wood or laminate flooring. Ideal for doorways.

Product Code - 1.33.0110

Length - 914mm & 2750mm

Colours - SAA & Gold Anodised

### Round Edge Floor Trim



Designed for joining wood/ laminate floors to different levels.

Product Code - 1.33.0120

Length - 914mm & 2750mm

Colours - SAA & Gold Anodised

## Other Brochures Available:

Joinery Seals & Glazing

Capex & Cresfinex (Roof Glazing)

Exitex Ltd  
Dundalk  
Ireland

T: (+353 42) 9371244

F: (+353 42) 9371221

Email: [info@exitex.com](mailto:info@exitex.com)

[www.exitex.com](http://www.exitex.com)



**SEALED IN QUALITY**

WB/0614